

<b>6</b>	<b>E</b>	<b>S</b>	<b>0</b>	<b>8</b>
----------	----------	----------	----------	----------

**Education Bureau**

**Territory-wide System Assessment 2011**

**Primary 6**

**English Language**

**Speaking**

**Preparation Time: 3 minutes**

**Assessment Time: 2 minutes**

## Presentation

### Instruction Card

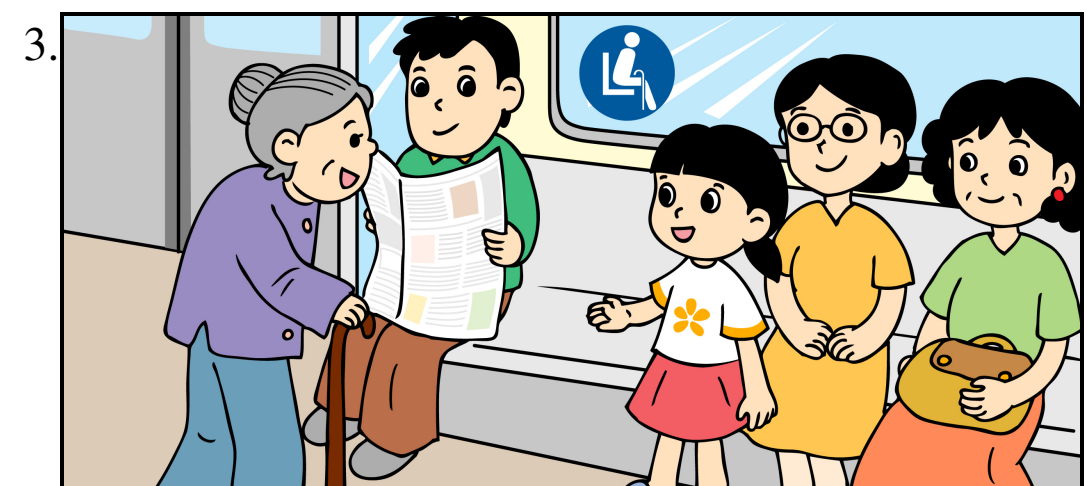
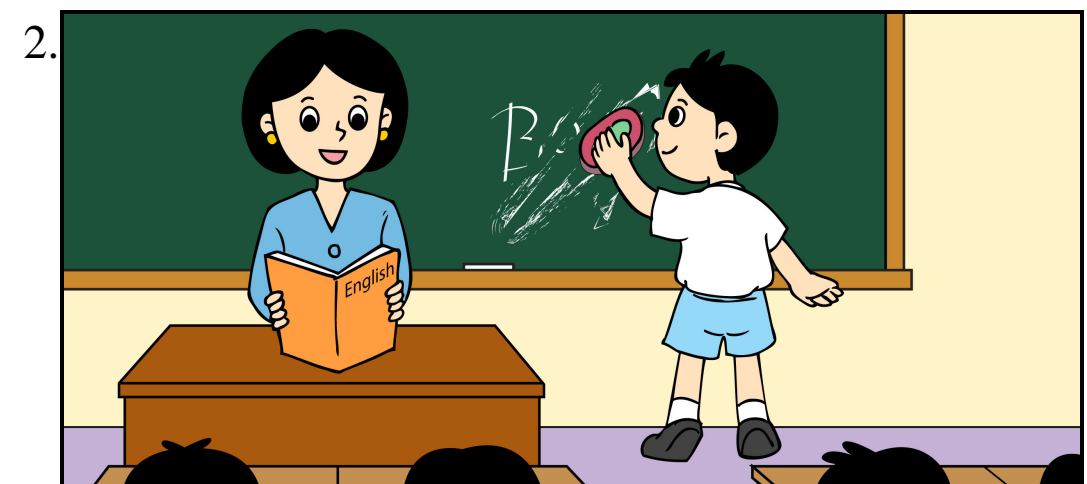
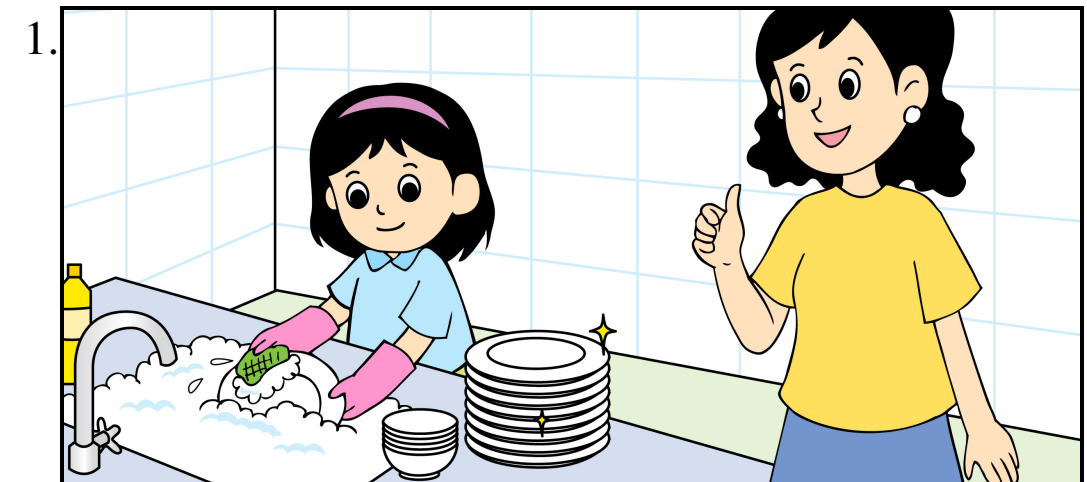
You are going to talk about helping people. You may use the pictures on the right to help you. You will have two minutes to complete the task.

Remember:

- Do not write on this Instruction Card.
- Look at the teacher when you do the presentation.

The following questions may help you:

- How often do you help people?
- Who do you help?
- What can you do to help at home?
- What can you do to help at school?
- What can you do to help other people?
- How do you feel after helping people?



**END OF PAPER**

