



* 6 E L 1 *

6	E	L	1
---	---	---	---



↑
請把電腦條碼貼在方格內
Please stick the barcode label in the box.

Education Bureau

Territory-wide System Assessment 2014◆

Primary 6 English Language

Listening

Instructions:

學生須知：

1. Stick barcode labels on pages 1, 3 and 5 in the spaces provided.
在第 1、3 及 5 頁的適當位置貼上電腦條碼。
2. There are 3 parts in this Question-Answer Booklet. Answer all questions.
本卷共有 3 部分，全部題目均須作答。
3. Do not write in the margins.
請勿在框線以外書寫。
4. Time allowed is about 30 minutes.
評估時限約為 30 分鐘。
5. The recording will be played continuously until the end of the Listening Assessment.
話語內容會連續播放，直至完卷為止。
6. Write your School Code, Class and Class Number in the boxes below.
在下面的方格內填寫學校編號、班別及班號。

Instructions for answering questions:

作答說明：

Multiple Choice Questions — Blacken the circle next to the correct answer with an **HB pencil**. For example :

選擇題 — 選出正確的答案，並用 **HB 鉛筆** 把該選項的圓圈塗黑和塗滿，如：

- | | | | |
|------|----|------|------|
| ● A. | | ● A. | ○ B. |
| ○ B. | or | | |
| ○ C. | 或 | ○ C. | ○ D. |
| ○ D. | | | |

Other Questions — Write your answers in the spaces provided.

其他題目 — 在適當的位置內填寫答案

School Code
學校編號

--	--	--

Class
班別

6	
---	--

Class No.
班號

--	--

↑
此格只許填寫一個大楷英文字母
Write one capital letter in this box.

◆ 2014 年小六全港性系統評估暫停舉行。此評估是學校以自願形式參與，而非全體小六學生參與的全港性系統評估。
The 2014 P6 TSA has been suspended. Participation in the 2014 P6 TSA is on a voluntary basis. As a result, this is a TSA in which not all P6 students will participate.

Part 1A

Tony is talking to his mother.

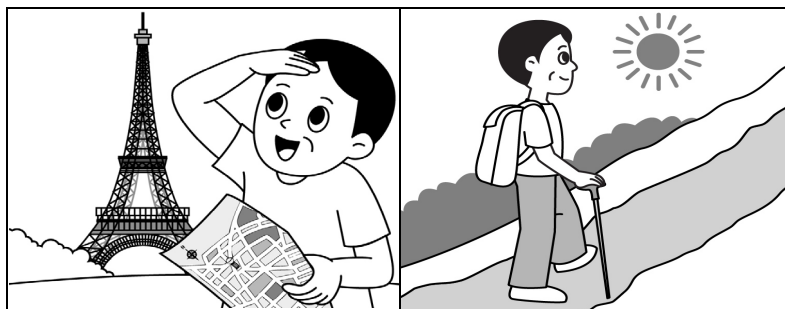
Listen to their conversation.

Choose the best answer by blackening the circle.

1. When is Tony's father's birthday?

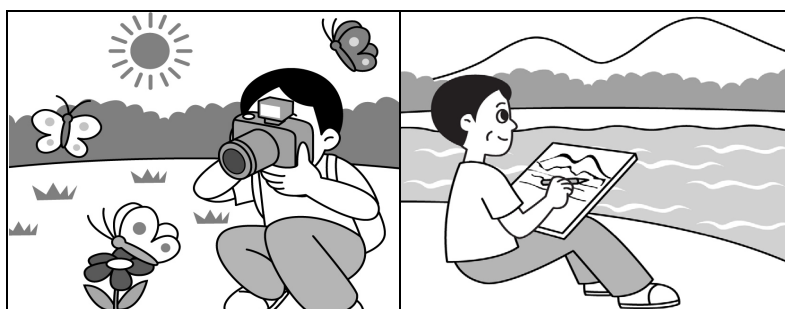
- ☐ A. Monday
- ☐ B. Thursday
- ☐ C. Saturday
- ☐ D. Sunday

2. What does Tony's father like best?



☐ A.

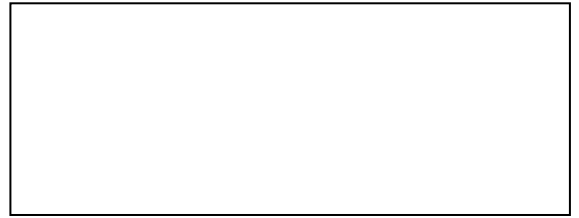
☐ B.



☐ C.

☐ D.

請把電腦條碼貼在方格內
Please stick the barcode label in the box.



3. Tony's father has _____.

- ☐ A. bought a new T-shirt
- ☐ B. no shirts or jackets
- ☐ C. thrown away all his clothes
- ☐ D. no new clothes

4. Tony's father dislikes _____.

- ☐ A. white
- ☐ B. black
- ☐ C. red
- ☐ D. grey

5. When Tony's mother thinks of the new T-shirt, how does she feel?



☐ A.

☐ B.



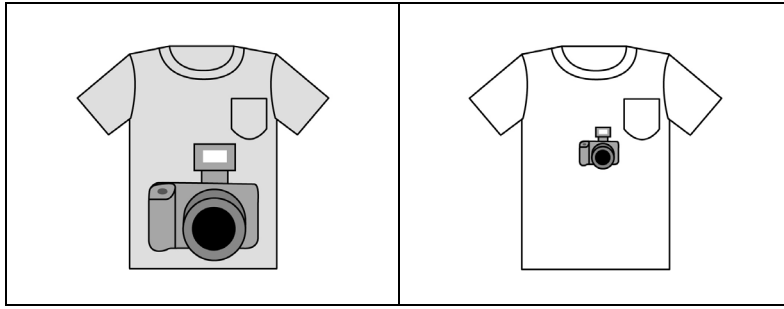
☐ C.

☐ D.

Please do not write in the margin. 請勿在此書寫。

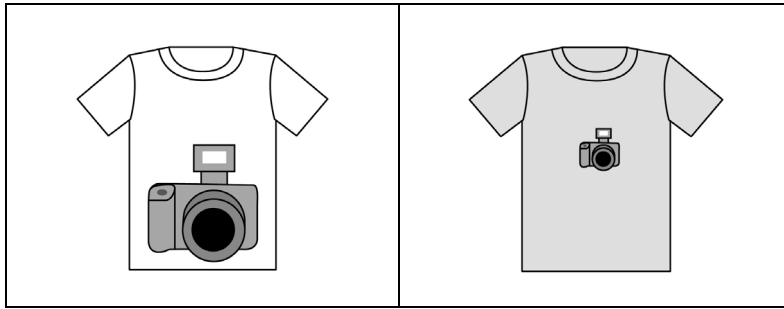
Please do not write in the margin. 請勿在此書寫。

6. Which T-shirt will they buy?



☐ A.

☐ B.



☐ C.

☐ D.

請把電腦條碼貼在方格內
Please stick the barcode label in the box.



Part 1B

Tony gets two phone calls at home.

Listen to the first conversation.

Write the correct answer in each blank to complete the note.

To : /
From : Mum
Subject : *Things to Buy*

1. ● _____ ***eggs***
2. ● ***A bag of 4*** _____
3. ● ***The*** _____ ***Post***

Written by: Tony

Listen to the second conversation.

Write the correct answer in each blank to complete the note.

To : *Sister*
From : *Aunt*
Subject : *Change of Appointment*

4. ● ***New meeting place :*** _____ ***Place***
5. ● ***New meeting time :*** _____ ***p.m.***
6. ● ***Remember to bring : Discount*** _____
to save money

Written by: Tony

Please do not write in the margin. 請勿在此書寫。

Please do not write in the margin. 請勿在此書寫。

Part 2A

Tony is listening to a news report.

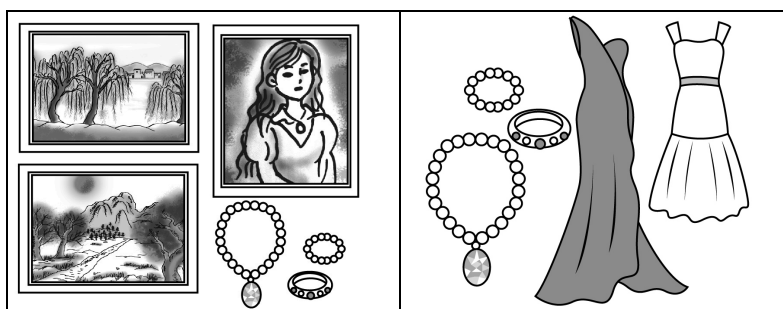
Listen to the report.

Choose the best answer by blackening the circle.

1. The house belongs to _____.

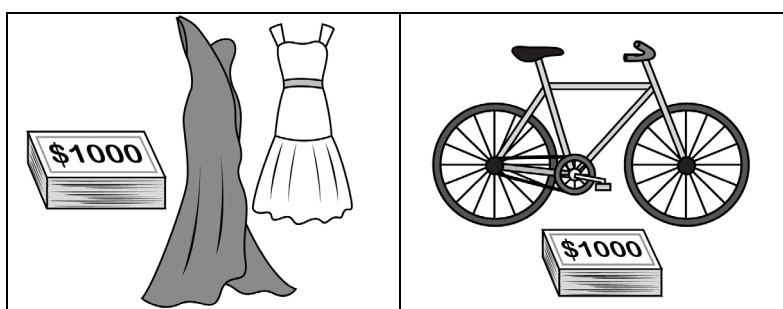
- ☐ A. Ella Lam
- ☐ B. Ellen Tam
- ☐ C. Elsa Tam
- ☐ D. Elsie Lam

2. What did the singer lose?



☐ A.

☐ B.



☐ C.

☐ D.

3. In the past 3 months, there were _____ crimes in the village.

☐ A. 2
☐ B. 3
☐ C. 4
☐ D. 5

Part 2B

Tony is listening to a weather report.

Listen to the report.

Choose the best answer by blackening the circle.

1. At 6:00 a.m., there was a _____ Rainstorm Warning.

☐ A. Red
☐ B. Bad
☐ C. Black
☐ D. Amber

2. How much rain has fallen on Hong Kong Island?

☐ A. 10 mm
☐ B. 60 mm
☐ C. 80 mm
☐ D. 100 mm

3. Tomorrow, there will be _____.

- ☐ A. lots of rain
- ☐ B. good weather
- ☐ C. no flooding in villages
- ☐ D. very hot weather

Part 3

Tony is talking to his teacher, Miss Green, on his school's radio programme.

Listen to the radio programme.

Choose the best answer by blackening the circle.

1. Miss Green has taught in Hong Kong for _____.

- ☐ A. 1 year
- ☐ B. 3 years
- ☐ C. 5 years
- ☐ D. 9 years

2. Miss Green came to Hong Kong because she _____.

- ☐ A. likes Asia more than Europe
- ☐ B. loves Hong Kong students
- ☐ C. wants to learn about a new culture
- ☐ D. enjoys living in a big city

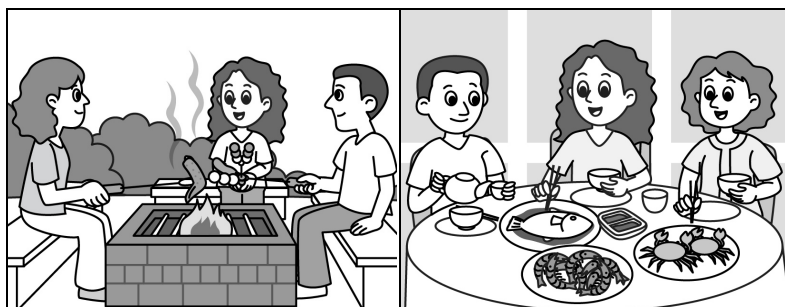
3. Miss Green thinks Hong Kong is _____.

- ☐ A. boring
- ☐ B. noisy
- ☐ C. exciting
- ☐ D. overcrowded

4. Miss Green's friends live on _____.

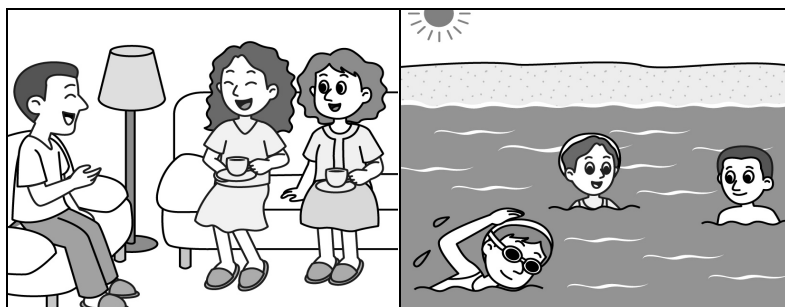
- ☐ A. Cheung Chau
- ☐ B. Ping Chau
- ☐ C. Lamma Island
- ☐ D. Lantau Island

5. What does Miss Green NOT do at weekends?



☐ A.

☐ B.



☐ C.

☐ D.

6. To know more Hong Kong people, Miss Green _____.
- ☐ A. teaches them English
 - ☐ B. is learning Cantonese
 - ☐ C. visits them at weekends
 - ☐ D. has moved to Lamma Island
7. Miss Green says that _____ was new to her.
- ☐ A. living in a city
 - ☐ B. teaching in a boys' school
 - ☐ C. learning a language
 - ☐ D. talking on campus radio
8. Miss Green feels all the students are _____.
- ☐ A. polite
 - ☐ B. active
 - ☐ C. rude
 - ☐ D. dishonest
9. In Miss Green's lessons, Tony's classmates love her _____.
- ☐ A. useful advice
 - ☐ B. fun activities
 - ☐ C. funny jokes
 - ☐ D. writing skills

10. Miss Green wants her students to _____.
- ☐ A. write more
 - ☐ B. speak more
 - ☐ C. listen more
 - ☐ D. read more
11. This radio programme is about Miss Green's _____.
- ☐ A. friends on islands
 - ☐ B. Cantonese classes
 - ☐ C. life in Hong Kong
 - ☐ D. overseas teaching experience

END OF PAPER

