

**Education Bureau**  
**Territory-wide System Assessment 2016**  
**Secondary 3 English Language**  
**Listening**  
**Question Booklet**

---

Instructions:

1. There are 12 pages in this Question Booklet.
2. Time allowed is approximately 35 minutes.
3. Do not write anything in this Question Booklet.
4. **Answer all questions in the Answer Booklet provided.**

## Part 1

Your school is participating in the District Education Fair. To prepare for the fair, your teacher has given you the flyer from last year to read and last year's Campus Radio recording from the Education Fair for you to listen to.

Read the flyer and listen to the recording. Answer the questions in Part A and Part B. You now have 2 minutes to answer the questions in Part A and read the questions in Part B.

### FLYER



**\*NEW\***  
**in 2015**



# The District Education Fair

**ATTENTION: Principals, Teachers and Students!**

***Do you have posters, pictures, models or other work you want to display?***

***Have you entered a competition recently?***

***We are looking for exhibits for the first ever District Education Fair. Come and see the exhibits from all schools around the district.***



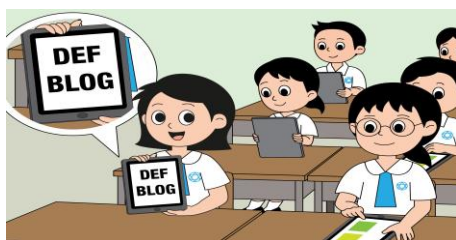
***Dates: May 18 – 22 (Mon – Fri)***

***Location: District Education Office***

***Time: 9.00 a.m. – 5.30 p.m.***



***\*NEW\* Displays connected to tablets linked to teachers/students***



- Visitors can post questions for students & teachers
- They can also read the answers on the display blog
- Find us here at [www.districteducationfair.com.hk](http://www.districteducationfair.com.hk) or call the District Education Office for more details

*Part A*

Answer the questions according to the flyer.

1. The flyer will most likely be sent to \_\_\_\_\_.
  - A. the District Education Office
  - B. the District Education Fair
  - C. all schools in the district
  - D. teachers and students who won competitions
  
2. The aim of the fair is to \_\_\_\_\_.
  - A. display teachers' work
  - B. display pictures of the district
  - C. get students to enter competitions
  - D. display students' work
  
3. The fair will run for \_\_\_\_\_.
  - A. more than a week
  - B. seven days
  - C. five days
  - D. eight hours
  
4. The fair is being held \_\_\_\_\_.
  - A. only at schools in the district
  - B. all around the district
  - C. at the District Education Office
  - D. all of the above
  
5. The tablets at each display will allow \_\_\_\_\_.
  - A. students to answer questions
  - B. visitors to display their own blogs
  - C. the District Education Office to provide more details
  - D. visitors to answer questions
  
6. The purpose of the flyer is to \_\_\_\_\_.
  - A. inform education officers about the fair
  - B. promote the blogs and use of tablets
  - C. promote the work of the District Education Office
  - D. inform schools and attract interest

*Part B*

Listen to the recording. It will be played twice. Do as much as you can the first time and answer all questions the second time. You now have 30 seconds to read the questions.

7. The displays at the fair are being set up by \_\_\_\_\_.
- A. students only
  - B. Mrs. Cheung
  - C. teachers and students
  - D. Ivan and Mrs. Cheung
8. The fair was the idea of \_\_\_\_\_.
- A. Mrs. Cheung
  - B. students in other schools
  - C. the District Education Office
  - D. teachers from different schools
9. The displays at the fair are about \_\_\_\_\_.
- A. one topic
  - B. lots of different topics
  - C. competitions
  - D. the school district
10. The idea behind the fair is to \_\_\_\_\_.
- A. allow teachers to share winning entries
  - B. bring students in the district together
  - C. highlight the work of the Education Office
  - D. bring teachers in the district together
11. The students will be able to \_\_\_\_\_.
- A. talk to the visitors at the fair
  - B. take a week off school
  - C. write questions
  - D. connect to the fair using the tablets
12. Students and teachers will **NOT** be able to answer questions in person about their displays because \_\_\_\_\_.
- A. they will be at school
  - B. questions cannot be submitted online
  - C. they will be writing their blogs at the fair
  - D. all questions can be found on the fair website

13. Ivan's response to the use of tablets is 'Wow, that's really modern...' He sounds \_\_\_\_\_.
- A. excited
  - B. negative
  - C. neutral
  - D. unimpressed
14. Mrs. Cheung says, 'We didn't want this to be a very static display with no interaction from the students and teachers.' Static here means \_\_\_\_\_.
- A. something that doesn't move or change
  - B. something heavy that doesn't move
  - C. some noise heard on a telephone or radio
  - D. something able to conduct an electric current
15. The tablets could \_\_\_\_\_.
- A. be something that people take to the fair
  - B. help make the fair successful
  - C. keep people away from the fair
  - D. make the fair unsuccessful

## Part 2

*You and your classmates have just returned from a study tour. The principal has asked all of you to report on the tour in various ways. Your English teacher has prepared an excerpt from a report on last year's study tour to help you with your report.*

Listen to the excerpt and answer the questions. The excerpt will be played twice. Do as much as you can the first time and answer all questions the second time. You now have 30 seconds to read the questions.

1. The documentary made by the students has \_\_\_\_\_.
  - A. one part
  - B. more than one part
  - C. no parts
  - D. interviews with Miss Wong
2. Miss Wong has lost \_\_\_\_\_.
  - A. the students
  - B. her job
  - C. some important documents
  - D. Sarah's recording
3. Sarah asks the other students to help find the missing items and tells Miss Wong that '...two heads are better than one.' 'Two heads are better than one' here means \_\_\_\_\_.
  - A. only two people have to look for the items
  - B. the more people looking the better
  - C. Miss Wong doesn't want any help
  - D. two policemen will help
4. After the policeman returns the missing items, Sarah says some things about Miss Wong. Sarah's comments about Miss Wong are \_\_\_\_\_.
  - A. positive
  - B. neutral
  - C. impolite
  - D. supportive
5. Tim says, '...she would forget her head if it wasn't attached to her body.' The person he is referring to is \_\_\_\_\_.
  - A. Sarah
  - B. Miss Wong
  - C. Sophie
  - D. Tony

6. Tim is going on the trip because he \_\_\_\_\_.
- A. needs to improve his English
  - B. is going to enjoy the classes
  - C. is bored out of his brain
  - D. wants to get some kangaroos
7. Sophie is going to \_\_\_\_\_.
- A. buy some gold in Australia
  - B. travel with her family
  - C. stay in Australia for a few years
  - D. stay with a host family
8. Jim is a boy interested in \_\_\_\_\_.
- A. sports
  - B. kangaroos
  - C. koalas
  - D. going to see the Sydney Harbour Bridge

### Part 3

*You and your partner are preparing a speech about how new Form one students can make friends. Your partner has found a poem for you both to listen to.*

Listen to the poem and answer the questions. The poem will be read twice. Do as much as you can the first time and answer all questions the second time. You now have 30 seconds to read the questions.

#### Stanza 1

1. The boy says that he is 'lonely'. 'Lonely' here means the boy \_\_\_\_\_.
  - A. has lots of friends
  - B. is sad because he has no friends
  - C. is never alone
  - D. lives far away in the countryside
  
2. The rhyming words in this stanza are \_\_\_\_\_.
  - A. lonely, lonely
  - B. lonely, alone
  - C. emails, phone
  - D. alone, phone

#### Stanza 2

3. The boy plays \_\_\_\_\_.
  - A. with his phone
  - B. on his computer
  - C. with his friends
  - D. by himself

#### Stanza 3

4. When the boy goes to school, \_\_\_\_\_.
  - A. he has a wonderful time all day long
  - B. he says "hi" to all his classmates
  - C. his classmates think he is great
  - D. his classmates don't talk to him at all

#### Stanza 4

5. The rhyming words in this stanza are \_\_\_\_\_.
  - A. strangers, street
  - B. sure, see
  - C. street, meet
  - D. way, even



**Stanzas 4 and 5**

6. When the strangers see the boy on the street, they will \_\_\_\_\_.
- A. stop and greet him
  - B. avoid him altogether
  - C. all say “hi”
  - D. send him an email
7. The boy has had \_\_\_\_\_ bath(s) this year.
- A. no
  - B. one
  - C. three
  - D. thirty
8. The title of the poem is ‘Lonely, So Lonely’. It could also be \_\_\_\_\_.
- A. I Need A Bath
  - B. Can You Tell I Smell?
  - C. I Don’t Have Any Friends
  - D. all of the above

**END OF PAPER**

**Do not write on this page.  
Answers written on this page will not be marked.**

**Do not write on this page.  
Answers written on this page will not be marked.**

Sources of materials used in this paper will be acknowledged in the Territory-wide System Assessment Report on the Basic Competencies of Students in Chinese Language, English Language and Mathematics published by the Hong Kong Examinations and Assessment Authority at a later stage.

©Education Bureau, HKSAR 2016

Prepared by the Hong Kong Examinations and Assessment Authority