

<b>9</b>	<b>E</b>	<b>R</b>	<b>2</b>
----------	----------	----------	----------

**Education Bureau**  
**Territory-wide System Assessment 2019**  
**Secondary 3 English Language**  
**Reading**  
**Question Booklet**

---

Instructions:

1. There are 16 pages in this Question Booklet.
2. Time allowed is 35 minutes.
3. Do not write anything in this Question Booklet.
4. **Answer all questions in the Answer Booklet provided.**

## Part 1

*You have to write some articles about recent events for the English Newsletter. To help you, your English teacher has given you pages from a newspaper to read.*

Read the newspaper pages and answer the questions.

# THE HONG KONG NEWS

## CHOCOLATE PROBLEMS

The Cocoa Belt is a strip of land where most of the world's tropical rain forest is located. Chocolate comes from the Cocoa Belt. Conditions there are perfect for growing the cacao trees. They need hot, humid and rainy weather to grow.

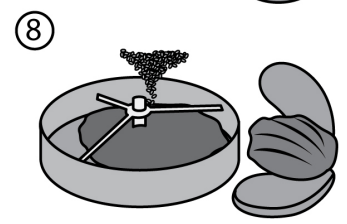
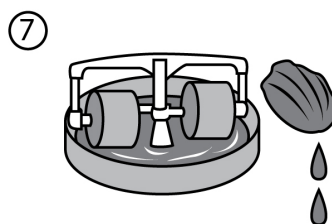
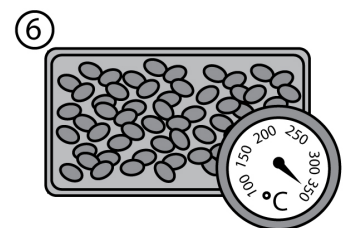
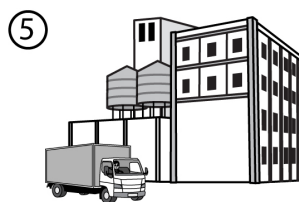
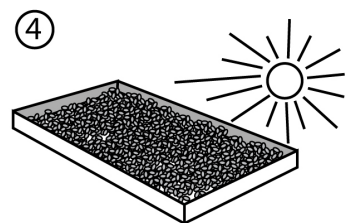
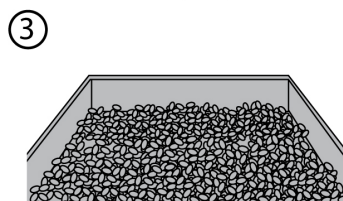
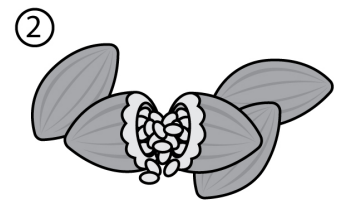
Climate change is affecting the weather in the belt, causing extremely high temperatures and much drier soils. The trees are also not producing as many cacao pods, which means a smaller amount of beans. The beans are what make chocolate. The weather change has also meant a spread of disease and pests that damage the trees. While these trees can live to be 200 years old, they only produce beans for 25 years.

Does chocolate grow on trees? No! The pods grow on the trees. The pods are picked when they are ripe and the beans are taken out of the pods. Machines can damage the trees so all of the work has to be done by hand.

The pods are not wasted. They are ground up into a powder called cocoa. Cocoa is used in baking and to make hot chocolate.

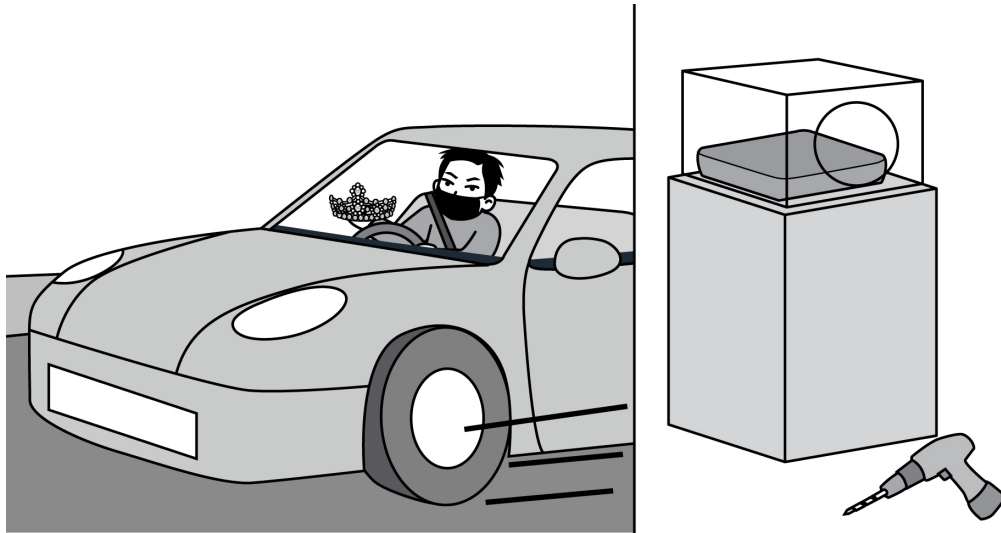
The beans have to be fermented. This process brings out the chocolate flavour. Then they are dried, packed and shipped all over the world. Chocolate makers take the beans and roast, then heat and melt them. Then they are mixed with sugar and milk. The liquid chocolate is poured into moulds and sold to chocolate lovers!

Did you know that it takes 400 beans to make two and a half cups of chocolate?

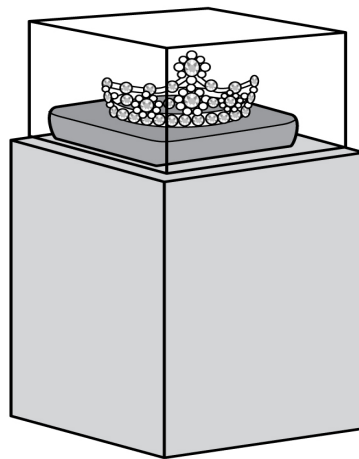


## TIARA STOLEN!

The Louis Royal Tiara was stolen last week. The robbers broke into the Royal Amberley Museum where the tiara was on display. They used a diamond drill to open the case and remove the tiara. This happened sometime between 10.15 p.m. and 11.00 p.m. on Tuesday evening. The open case triggered an alarm. Security arrived in the hall to find the case empty. A getaway car was found near the museum, but there was no sign of the robbers or the tiara.



The tiara is a headpiece, similar to a crown. The tiara was made for Princess Sarah by her husband. The Louis Royal Tiara was on loan from Princess Sarah to the museum when it was stolen. The museum was using the piece in its *Crowns and Jewels Exhibition*.



James St. Clair, the spokesperson for the museum, told police that the piece was worth millions, but it could be worth much more if it was broken up and the diamonds and other rare jewels sold separately.

Choose the best answer and blacken the circle in the Answer Booklet.

### Chocolate Problems

1. The production of chocolate is being affected by \_\_\_\_\_.
  - A. the Cocoa Belt
  - B. humid weather
  - C. climate change
  - D. rain forests
  
2. The cocoa trees grow best when \_\_\_\_\_.
  - A. the weather is cold and wet
  - B. it is hot and dry
  - C. the soil is dry
  - D. the weather is hot and rainy
  
3. If the trees are affected by climate change, they \_\_\_\_\_.
  - A. help spread disease
  - B. produce more beans
  - C. don't grow as many pods
  - D. don't grow pods
  
4. There are many things that can damage the trees. Some of these things are \_\_\_\_\_.

1. rainy weather	2. disease
3. hand picking of the pods	4. pests

  - A. 1 and 2
  - B. 2 and 3
  - C. 3 and 4
  - D. 2 and 4
  
5. If the trees produce a smaller amount of beans, \_\_\_\_\_.
  - A. the price of chocolate will probably increase
  - B. it will be harder to ferment the beans
  - C. more people will be needed to pick the pods
  - D. machines will be used to pick the pods

6. The powder used to make hot chocolate is made from \_\_\_\_\_.
- A. the pods
  - B. milk
  - C. the beans
  - D. sugar
7. How do the beans become chocolate? Put the process into the correct order.
- 1. beans are fermented
  - 2. pods grown on trees
  - 3. pods ripen
  - 4. beans removed from pods
- A. 1, 2, 3 and 4
  - B. 2, 3, 4 and 1
  - C. 3, 4, 1 and 2
  - D. 4, 3, 2 and 1
8. It takes \_\_\_\_\_ beans to make nearly two and a half cups of chocolate.
- A. 2
  - B. 25
  - C. 200
  - D. 400

**Tiara Stolen!**

9. The item stolen is called the \_\_\_\_\_ Tiara.
- A. Royal Amberley
  - B. Louis Royal
  - C. Princess Sarah
  - D. James St. Clair
10. What happened at the museum? Put the events into the correct order.
- 1. security arrived
  - 2. police found the getaway car
  - 3. robbers opened the case with the tiara inside
  - 4. the alarm went off
- A. 1, 2, 3 and 4
  - B. 1, 4, 3 and 2
  - C. 2, 3, 4 and 1
  - D. 3, 4, 1 and 2

11. If something is 'on loan' to the museum, it \_\_\_\_\_.

- A. belongs to the museum
- B. was made for the museum
- C. was bought by James St. Clair for the museum
- D. has been borrowed by the museum

12. The tiara is worth a lot of money. If it is cut up and sold in pieces, \_\_\_\_\_.

- A. it is worth even more money
- B. it won't be worth anything as it will be broken
- C. security can sell it back to the museum
- D. James St. Clair will speak to the robbers

## Part 2

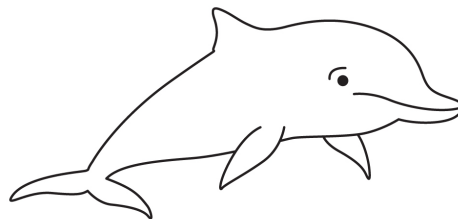
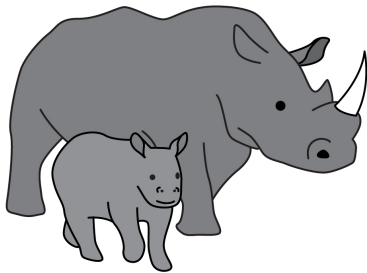
*All students at your school have to do a project and a presentation. You have chosen protecting animals. Your English teacher has given you a report about extinct and endangered animals to help you prepare.*

Read the report and answer the questions.

## Report

# EXTINCT AND ENDANGERED ANIMALS IN 2019

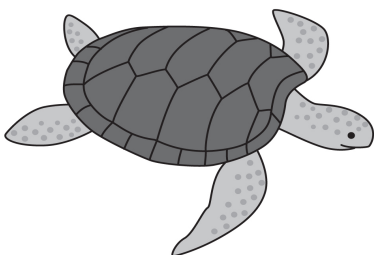
Have you ever seen a live West African Rhinoceros, or a Baiji White Dolphin in the zoo?



The answer would be ‘**NO**’ because these animals are extinct! If an animal is extinct, it doesn’t exist anymore. All that we could see would be photos, pictures or even bones or fossils. In the past, it is likely that natural events such as sudden increases or decreases in the temperature or sudden sea level changes were to blame.

Most animal extinctions are now caused by humans. Humans are to blame for destroying the habitat of animals, cutting down forests and expanding farming land. Pollution, overfishing and hunting are also to blame, as is climate change.

## ANIMALS THAT ARE IN DANGER OF BECOMING EXTINCT



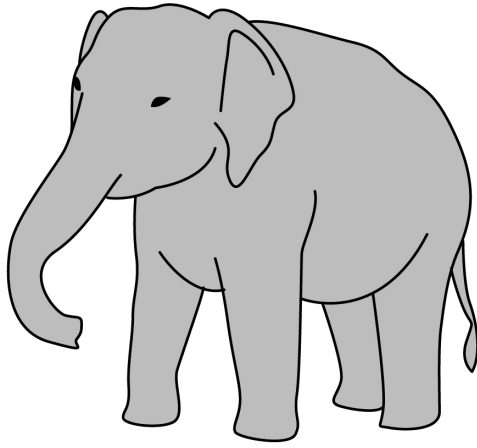
### Sea Turtle

Two types of sea turtles are in danger – the Hawksbill Turtle and the Leatherback Turtle. In the past 100 years, 90% of the Hawksbill Turtle population has been lost. The largest loss – 80% has been lost in the last 10 years.



### Tiger

The tiger has been hunted for its fur. There were a total of 9 subspecies of tiger, but 3 are already extinct. The South China Tiger and Sumatran Tiger are under threat. The South China Tiger has not been seen in the wild since the 1970’s, so many think it is now extinct.

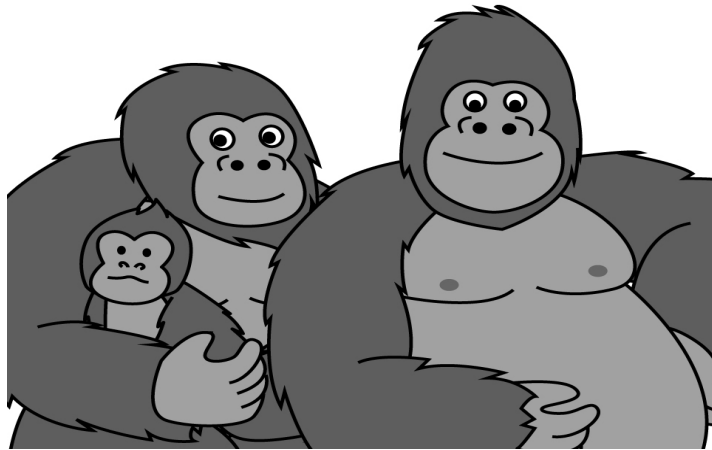


### **Sumatran Elephant**

In the past 25 years, the Sumatran Elephant has lost 70% of its habitat. Humans have taken the land to build palm oil plantations. They have cut down the forests and built towns and cities in what used to be the habitat, or natural home of the elephant.

### **Gorillas**

Cross River Gorillas and Mountain Gorillas are both in danger of becoming extinct. There are only around 200 – 300 Cross River Gorillas left in the wild and 900 Mountain Gorillas. Gorillas are under threat from poachers, people who illegally catch or shoot animals. They are also caught and eaten as food. Disease has also affected their numbers.



Choose the best answer and blacken the circle in the Answer Booklet.

1. If you want to see an extinct animal you could \_\_\_\_\_.
  - A. visit the zoo
  - B. go to West Africa
  - C. look at pictures or bones
  - D. buy one from poachers
  
2. There are many factors to blame for animal extinction. In the past \_\_\_\_\_ was/were to blame.
  - A. the cutting down of forests
  - B. expanding farming land
  - C. pollution
  - D. increases or decreases in temperature



3. Turtles are in danger. Most of the population has been lost in the last 10 years. This is most likely because of \_\_\_\_\_.
- A. pollution
  - B. climate change
  - C. hunting
  - D. all of the above
4. The South China Tiger has not been seen for close to \_\_\_\_\_ years.
- A. 10
  - B. 25
  - C. 50
  - D. 100
5. Animals all live in a 'habitat'. A 'habitat' here is \_\_\_\_\_.
- A. a palm oil plantation
  - B. towns and cities
  - C. where the animals live
  - D. farming land
6. Gorillas are in danger of becoming extinct. This is because of \_\_\_\_\_.
- A. poachers
  - B. diseases
  - C. being eaten as food
  - D. all of the above
7. All animals in the report are affected by humans. The animal most affected by loss of space is the \_\_\_\_\_.
- A. Sea Turtle
  - B. Tiger
  - C. Sumatran Elephant
  - D. Gorillas
8. This is page one of the report. The next page would most likely be about \_\_\_\_\_.
- A. how to see extinct animals
  - B. what you can do to help animals from becoming extinct
  - C. how to become a poacher
  - D. how to catch a gorilla

### Part 3

*You are preparing to write a fantasy story. Your English teacher has given you a page from an encyclopedia, book information and a book blurb to help you.*

Read the encyclopedia page, book information and book blurb and answer the questions.

### Encyclopedia of Mythical Beasts

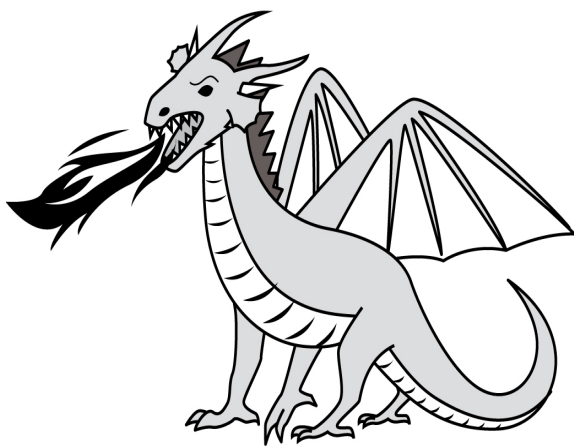
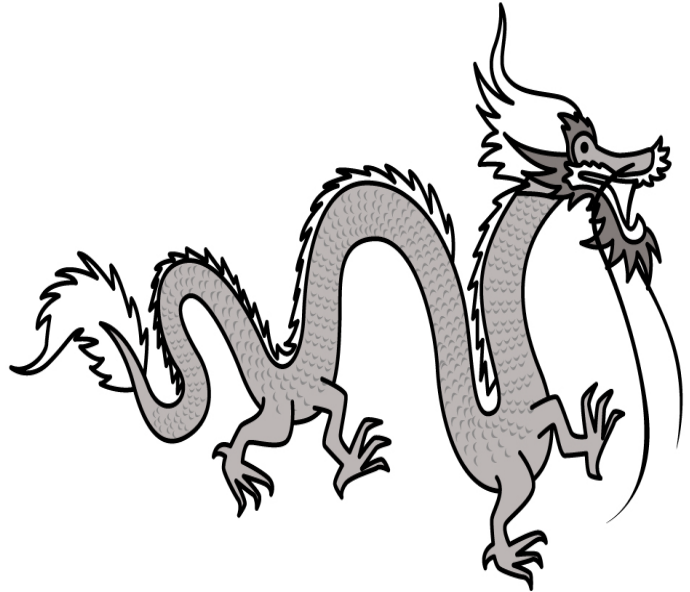
## MYTHICAL BEASTS

### The Chinese Dragon...

is a symbol of power, strength, prosperity and good luck.

It is usually drawn as snake-like with four legs. The dragon is powerful. It is able to control water, rainfall, typhoons and floods.

Historically the dragon was associated with the Emperor of China.



### European Dragons...

are fire-breathing creatures. They have bat-like wings, four legs and a tail. Legends say that dragon's blood has special powers.

Dragons are known to have a hoard of gold and treasure they protect. Dragons can be greedy or close friends of humans as well as being noble, wise and kind.

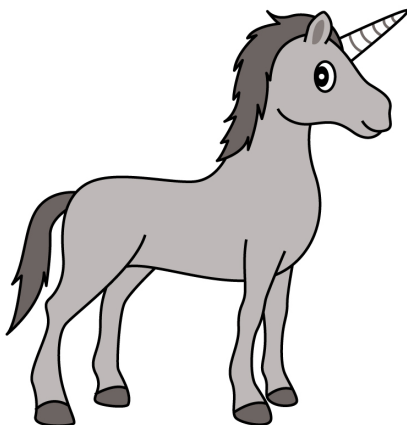
## The Phoenix...

is known as the bird that rises from the ashes.

The phoenix lives for 500 years before it dies in flames and is born again.

The feathers of the phoenix are colourful, with many reports saying that the feathers are red and yellow. The legs are covered in scales.

Depending on the reports, the bird ranges from the size of an eagle to being as big as an ostrich.



## The Unicorn...

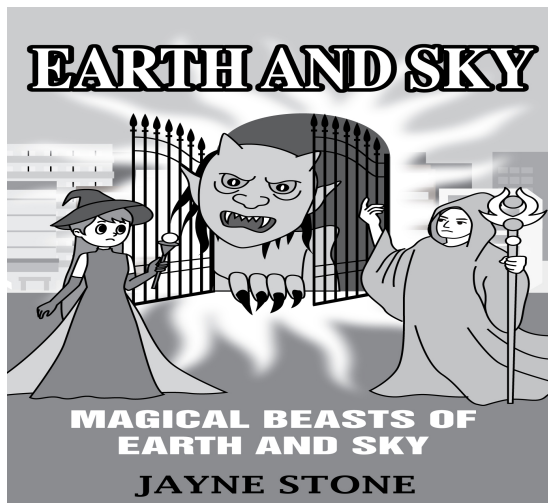
is a horse-like animal with a long horn in the middle of its forehead.

The horn was said to have the power to heal and to make water safe to drink.

*The Chinese Unicorn – Qilin* is a hybrid animal, made up of the body of a deer, the head of a lion, with green scales and a long curved horn.

## Book Information and Blurb

### Book Information



**Title:** *Earth and Sky*

**Series:** *Magical Beasts of Earth and Sky*

**Author:** *Jayne Stone*

**Category:** *Young Adult Fantasy*

**ISBN:** *Ebook: 9785 301 64974*

*Paperback: 978-0-9873431-2-4*

*Audiobook: 9784 303 65987*

**Publisher:** *Weldon Press*

**Published:** *December 2015*

**Pages:** *456*

**Awards:**

- *Trudy Stone YA Award for Best Series*
- *Seal Of Excellence (Indie Publishing)*
- *Fantasy Medallion for Outstanding Novel in a Series*
- *Best YA Fiction Award*

### Blurb

Long ago, the gates between earth and sky opened. Magical beasts and horrible, dangerous monsters escaped, roaming the earth and ruling the skies. After long battles, the Gate Witches/Wizards and Beast Talkers forced the monsters back behind the gates and closed them forever...or so everyone thought.

Hundreds of years later the wars are only a memory, BUT monsters are roaming earth and sky again. Mara knows something is wrong with the gates, but no one believes her. Mara and her friend Terk have to stop the gates from opening and releasing the monsters.

Together they have to develop skills that will make Mara a Gate Witch and Terk a Beast Talker. Walpin, a wise old man, guides them. Nori, a warrior, protects them all. Can Mara and Terk learn in time or will their world be ruled by monsters again? If they fail, they could all die.

### Reviews:

‘A fast-paced adventure. Highly entertaining for readers of all ages!’

**Kevin Kelsey, author**

‘Earth and Sky has it all – rich, detailed world building, realistic characters and a great plot.’

**Jenny Smith, YA Book Reviews**

Choose the best answer and blacken the circle in the Answer Booklet.

### Encyclopedia of Mythical Beasts

1. Both the Chinese and European Dragons \_\_\_\_\_.
  - A. are symbols for good luck
  - B. have four legs
  - C. have treasure
  - D. can control water

2. The European Dragon is the only dragon that \_\_\_\_\_.

- |                                     |                       |
|-------------------------------------|-----------------------|
| 1. can control water                | 2. has powerful blood |
| 3. can talk to the Emperor of China | 4. can breathe fire   |

- A. 1 and 2
- B. 2 and 3
- C. 2 and 4
- D. 1 and 4

3. The Phoenix \_\_\_\_\_.

- A. is a type of bird
- B. has a short life
- C. is very small
- D. is featherless

4. Phoenix feathers are \_\_\_\_\_.

- A. colourless
- B. made from ashes
- C. covered in scales
- D. colourful

5. The Chinese Unicorn – Qilin is called a ‘hybrid’. Which meaning of hybrid best describes the Qilin in the passage?

- |  |   |
|--|---|
| 1. (n) an animal or plant produced from parents of different breeds or types | 2. (n) a thing made by combining two different elements |
|--|---|

*The bird was a hybrid of a chicken and a duck.*

*It's a wonderful hybrid of poetry and fiction.*

- |   |   |
|---|---|
| 3. (n) a word formed from different languages | 4. (n) a car with a petrol and electric motor |
|---|---|

*Television is made up of the Greek word 'tele' and the Latin word 'vision'.*

*The Japanese hybrid can use both motors.*

- A. 1
- B. 2
- C. 3
- D. 4

6. The horn of the unicorn \_\_\_\_\_.
- A. is curved and short
  - B. has green scales
  - C. is powerful
  - D. is used to drink water
7. The mythical beasts that can fly are the \_\_\_\_\_.
- 1. Phoenix
  - 2. Unicorn
  - 3. Chinese Unicorn
  - 4. European Dragon
- A. 1 and 2
  - B. 1 and 3
  - C. 1 and 4
  - D. 2 and 3
8. The pages that follow the information about the four mythical beasts will probably be about \_\_\_\_\_.
- A. where to get your own mythical beast
  - B. how to meet the Chinese Emperor
  - C. other interesting mythical beasts
  - D. how and where to find a dragon hoard

**Book Information and Blurb**

9. The title of the book is \_\_\_\_\_.
- A. Magical Beasts of Earth and Sky
  - B. Young Adult Fantasy
  - C. Earth and Sky
  - D. Weldon Press
10. The author of the book is \_\_\_\_\_.
- A. Trudy Stone
  - B. Kevin Kelsey
  - C. Jayne Stone
  - D. Jenny Smith

11. The book \_\_\_\_\_.

- |                          |                                     |
|--------------------------|-------------------------------------|
| 1. is close to 500 pages | 2. comes in three different formats |
| 3. has won no awards     | 4. is part of a series              |

- A. 1, 2 and 3
- B. 1, 3 and 4
- C. 1, 2 and 4
- D. 2, 3 and 4

12. The main characters of the book are \_\_\_\_\_.

- A. Jayne and Mara
- B. Mara and Terk
- C. Terk and Kevin
- D. Jenny and Walpin

13. The characters in the book have to stop the ‘monsters’. Which meaning best describes the word ‘monsters’ in the blurb?

- |  |                                      |
|--|--------------------------------------|
| 1. (n) an inhumanly cruel or wicked person | 2. (n) a thing of extraordinary size |
|--|--------------------------------------|

*He was an unfeeling monster who hated her.*

*This is a monster of a book, almost 500 pages.*

- |  |  |
|--|--|
| 3. (n) a rude or badly behaved person, typically a child | 4. (n) a large, ugly, and frightening creature |
|--|--|

*She's only one year old, but already she is a little monster.*

*A monster with the head of a lion and the body of a wolf.*

- A. 1
- B. 2
- C. 3
- D. 4

14. Mara knows something is wrong because \_\_\_\_\_.

- A. Terk tells her
- B. she is hundreds of years old
- C. her memory tells her
- D. monsters have been seen again

15. Walpin is a \_\_\_\_\_.

- A. Beast Talker
- B. Gate Wizard
- C. wise old man
- D. warrior

16. The reviews about the book are \_\_\_\_\_.

- A. positive
- B. negative
- C. funny
- D. neutral

**END OF PAPER**

Sources of materials used in this paper will be acknowledged in the Territory-wide System Assessment Report on the Basic Competencies of Students in Chinese Language, English Language and Mathematics published by the Hong Kong Examinations and Assessment Authority at a later stage.

©Education Bureau, HKSAR 2019

Prepared by the Hong Kong Examinations and Assessment Authority