

<b>6</b>	<b>E</b>	<b>S</b>	<b>1</b>	<b>4</b>
----------	----------	----------	----------	----------

**Education and Manpower Bureau**

**Territory-wide System Assessment 2007**

**Primary 6**

**English Language**

**Speaking**

**Preparation Time: 3 minutes**

**Assessment Time: 2 minutes**

## Presentation

### Instruction Card

You are going to tell the teacher about **TWO** pets you would like to have. You may use the pictures on the right to help you. You will have two minutes to do the presentation.

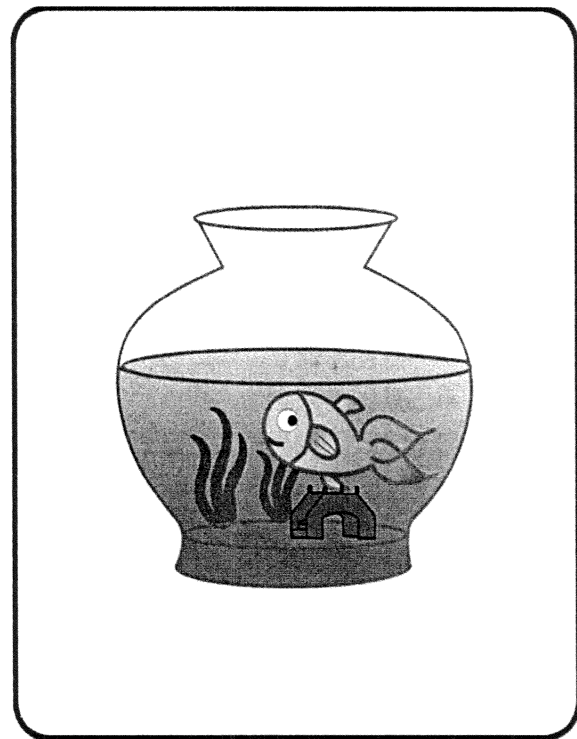
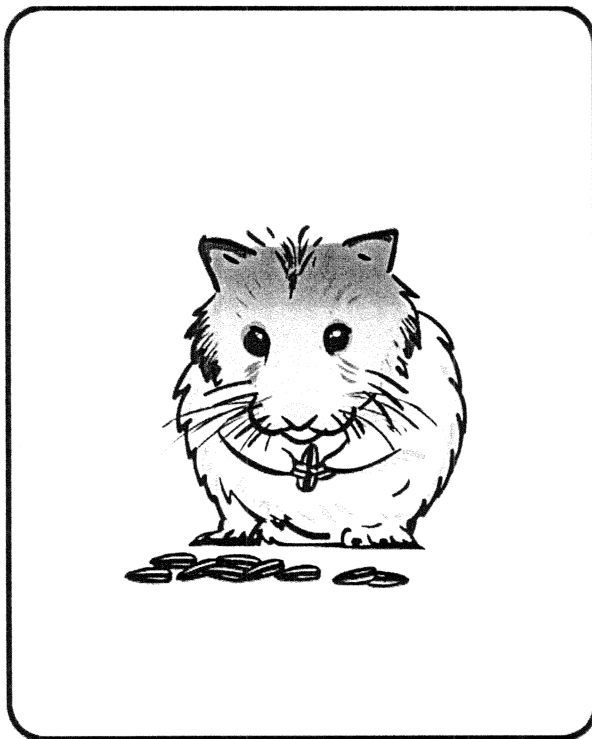
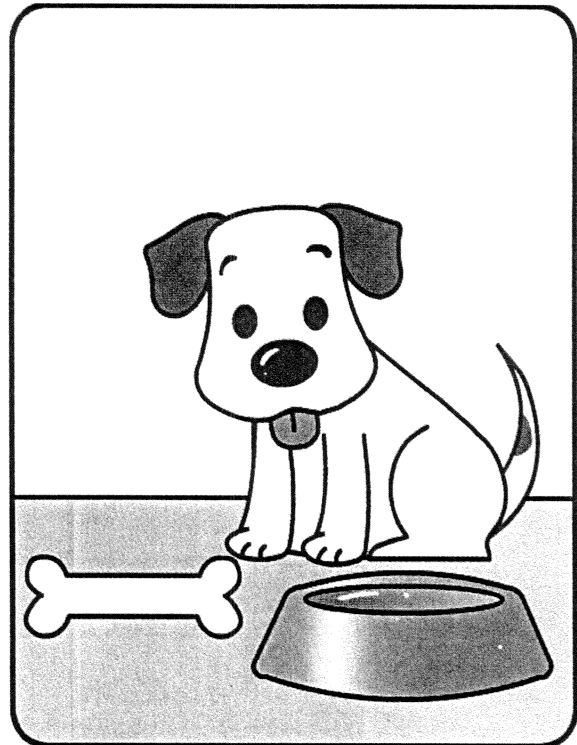
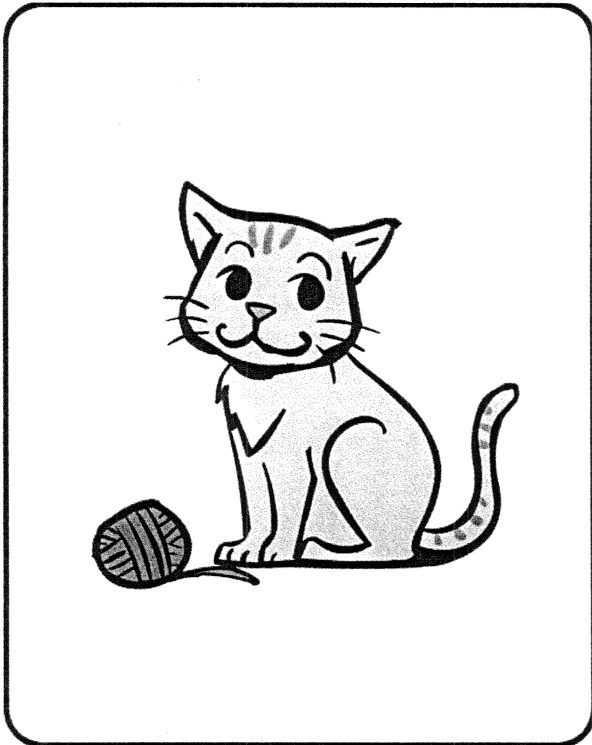
Remember:

- Do not write on this Instruction Card.
- Look at the teacher when you do the presentation.

The following questions may help you:

- Which two pets do you want to have?
- Why do you want to have them?
- How will you take care of them?
- What will you do with them?

6	E	S	1	4
---	---	---	---	---



END OF PAPER