

6	E	S	1	2
----------	----------	----------	----------	----------

Education Bureau

Territory-wide System Assessment 2009

Primary 6

English Language

Speaking

Preparation Time: 3 minutes

Assessment Time: 2 minutes

Presentation

Instruction Card

Here is some information about pandas. Give a short talk on pandas. You may use the information on the right to help you. You will have two minutes to complete the task.

Remember:

- Do not write on this Instruction Card.
- Look at the teacher when you do the presentation.

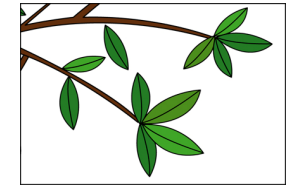
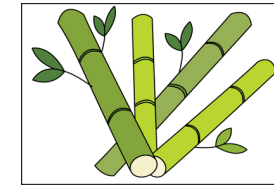
The following questions may help you:

- What do pandas look like?
- How long do pandas live?
- Where do pandas live?
- What do pandas eat?
- What can pandas do?
- What dangers do pandas face?

What do pandas look like?

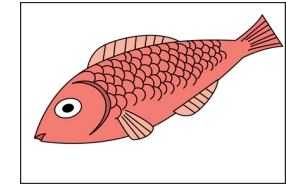
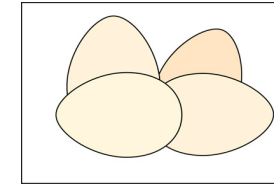
colour: black and white
weight: up to 150 kg
height: up to 1.5 m

What do pandas eat?



How long do pandas live?

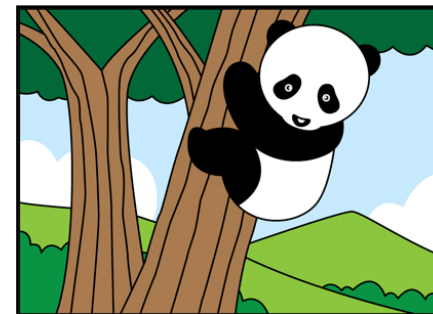
20 – 30 years



Where do pandas live?



What can pandas do?



What dangers do pandas face?



END OF PAPER

©Education Bureau, HKSAR 2009

Prepared by the Hong Kong Examinations and Assessment Authority