

| | | | | |
|----------|----------|----------|----------|----------|
| 6 | E | S | 1 | 0 |
|----------|----------|----------|----------|----------|

Education Bureau

Territory-wide System Assessment 2013

Primary 6

English Language

Speaking

Preparation Time: 3 minutes

Assessment Time: 2 minutes

Presentation

Instruction Card

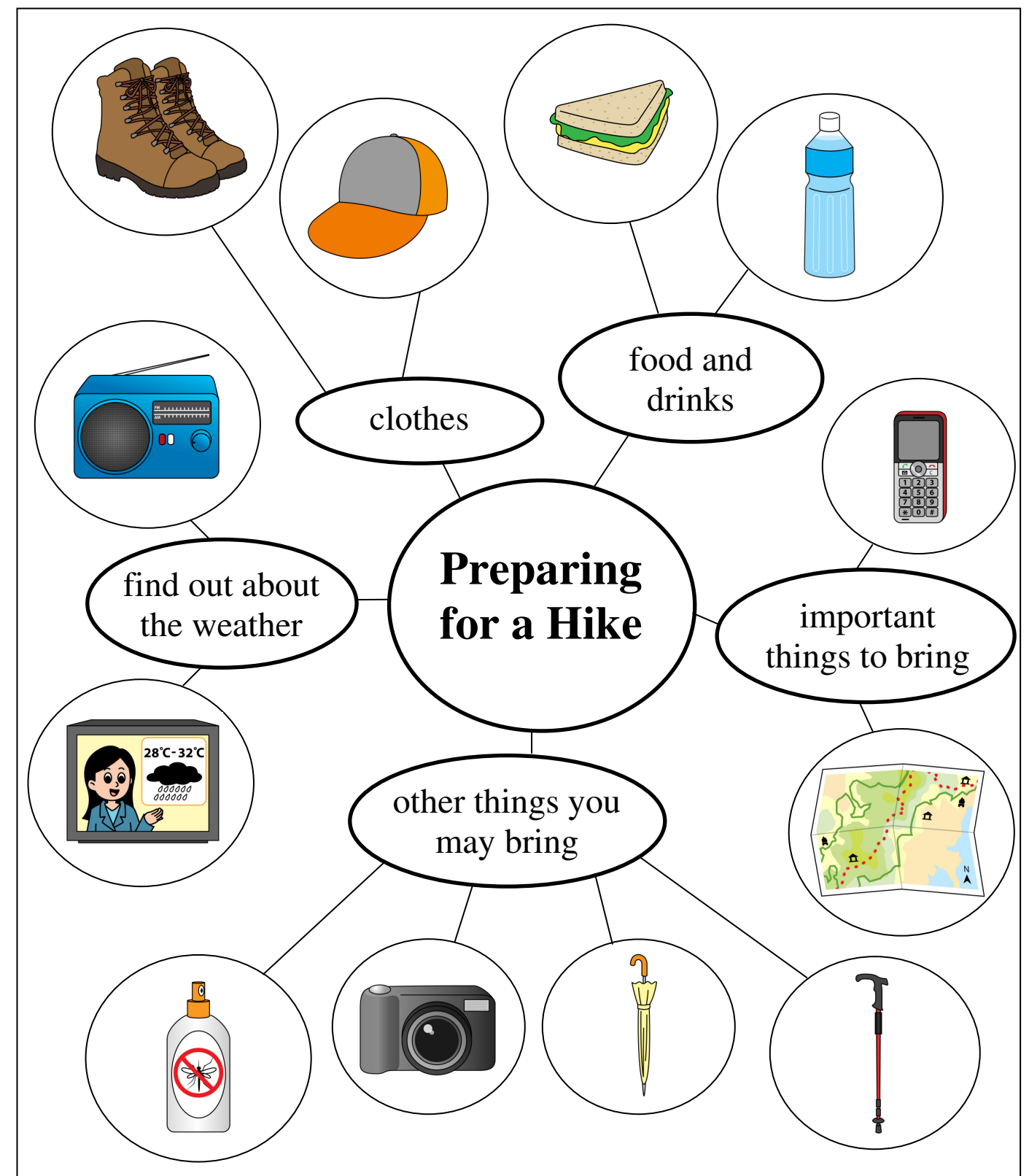
You often go hiking with your parents on Sundays. Give a talk on how you prepare for a hike. You may use the information on the right to help you. You will have two minutes to complete the task.

Remember:

- Do not write on this Instruction Card.
- Look at the teacher when you do the presentation.

The following questions may help you:

- What should you wear for hiking?
- What food and drinks should you bring?
- How do you find out about the weather? Why is it important to do this?
- What important things should you bring? Why?
- What other things can you bring? Why?
- How do you protect the environment when hiking?



END OF PAPER

