

6	E	S	1	2
----------	----------	----------	----------	----------

Education Bureau

Territory-wide System Assessment 2013

Primary 6

English Language

Speaking

Preparation Time: 3 minutes

Assessment Time: 2 minutes

Presentation

Instruction Card

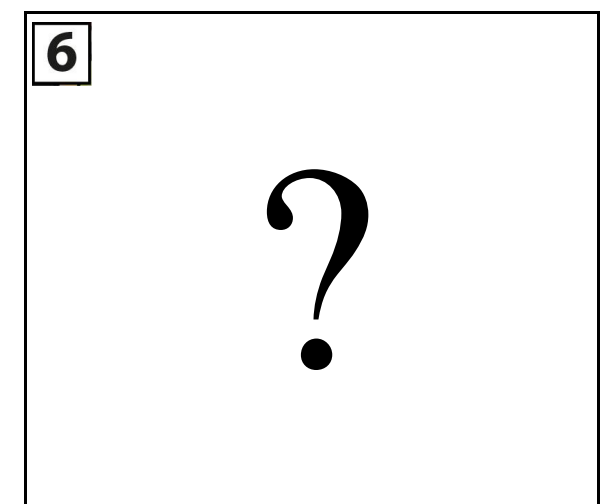
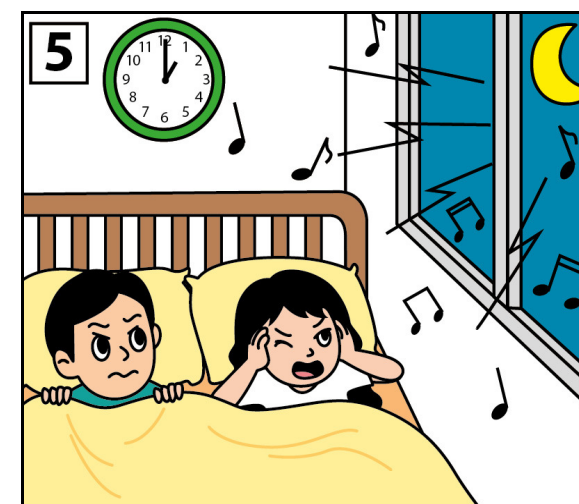
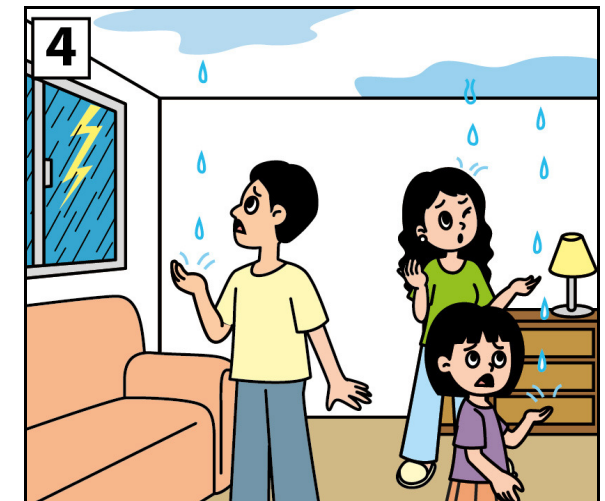
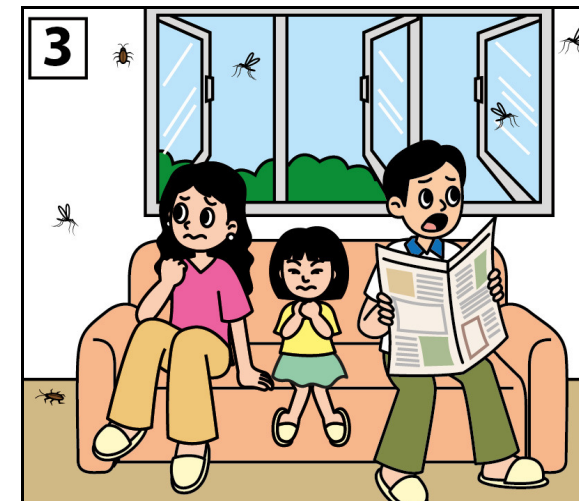
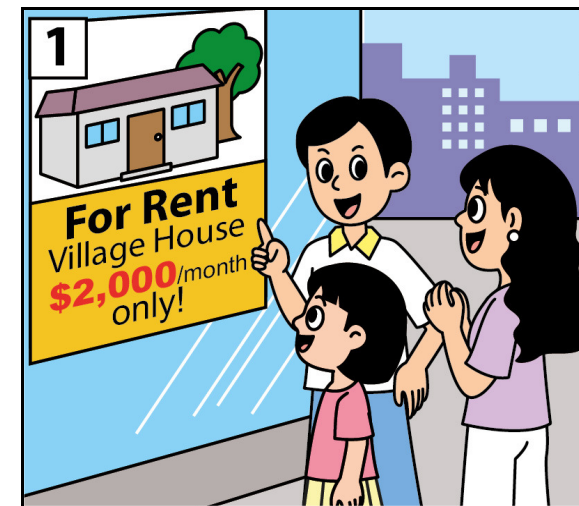
Here are some pictures about Mary and her parents. Use the pictures on the right to tell a story about them. You will have two minutes to complete the task.

Remember:

- Do not write on this Instruction Card.
- Look at the teacher when you do the presentation.

The following questions may help you:

- What does Mary's family want to do?
- Do they like the house? Why? How much does it cost to rent?
- What comes into their house when they open the windows?
- What happens when it rains?
- What happens at night?
- How do they feel?
- What do you think they will do? Why?



END OF PAPER

