

| | | | | |
|----------|----------|----------|----------|----------|
| 6 | E | S | 1 | 2 |
|----------|----------|----------|----------|----------|

Education Bureau

Territory-wide System Assessment 2015

Primary 6

English Language

Speaking

Preparation Time: 3 minutes

Assessment Time: 2 minutes

Presentation

Instruction Card

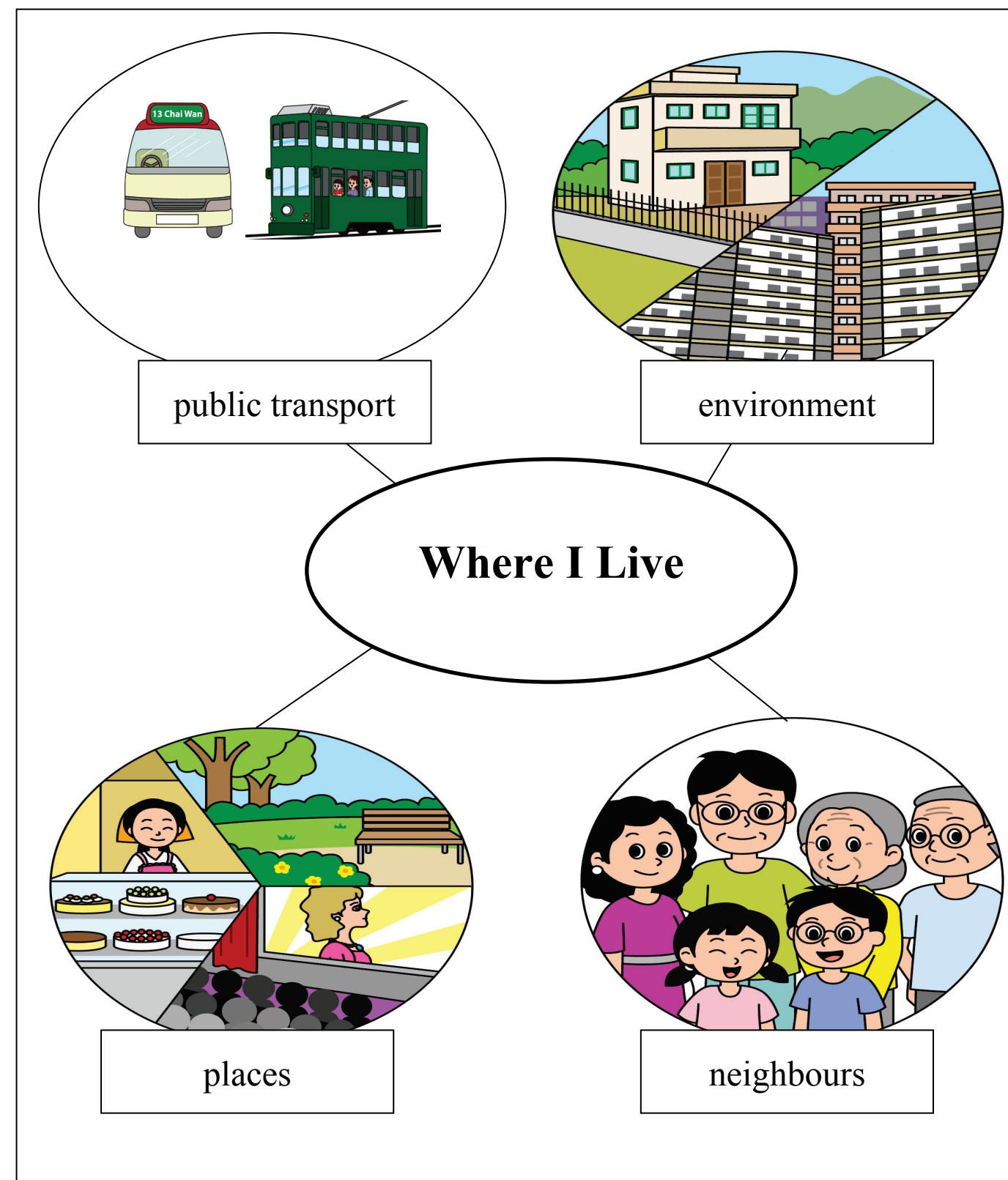
You are going to talk about where you live. You may use the information on the right to help you. You will have two minutes to complete the task.

Remember:

- Do not write on this Instruction Card.
- Look at the teacher when you do the presentation.

The following questions may help you:

- Where do you live? (e.g. Tai Po)
- What kinds of public transport can you take there?
- What is the environment like near your home?
- What places do you go to near your home?
- Do you like your neighbours? Why / Why not?
- Do you like where you live? Why / Why not?



END OF PAPER

