

Education Bureau
Territory-wide System Assessment 2015
Secondary 3 English Language
Listening
Question Booklet

Instructions:

1. There are 12 pages in this Question Booklet.
2. Time allowed is approximately 35 minutes.
3. Do not write anything in this Question Booklet.
4. **Answer all questions in the Answer Booklet provided.**

Part 1

Your teacher has asked you to write some public service announcements for both Campus TV and the School Radio programme. She also wants you to design posters. She has prepared a poster for you to read and some announcements for you to listen to as examples.

Read the poster and listen to the conversation and the announcements. Answer the questions in Part A and Part B. You now have 2 minutes to answer the questions in Part A and read the questions in Part B.

Poster

Hong Kong Weather Watch

The weather in Hong Kong can sometimes be dangerous, particularly during the rainy season between April and September. The rain in May and June can be very heavy and may cause major floods, landslips and traffic problems. When there is a typhoon or a severe weather warning, the public must listen to all announcements on TV and radio before they go to work or school.

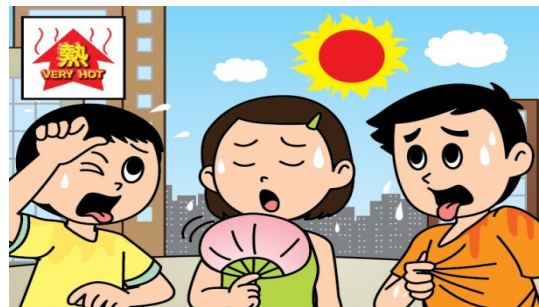


Typhoon Signals

When there is a typhoon, several warning signals will be issued. It is important that the public knows what each of them means.

Very Hot Weather Warning

Hot weather can be just as dangerous as wet and windy weather. The public must also be careful when it is very hot!



Rainstorm Warning Signals

These are signals that indicate how heavy the rain is and that school may be cancelled for the day.



Landslip Warning

Landslips can be dangerous! Lots of rain can cause the earth to loosen and come crashing down the mountainside, crushing everything in its path!



Part A

Answer the questions according to the poster.

1. The typhoon signal shown in the picture indicates that _____.
 - A. snow is affecting Hong Kong
 - B. primary and secondary students must not go to school
 - C. people should listen to announcements to see if the situation gets worse
 - D. all of the above

2. In hot weather, people should make sure they _____.
 - A. drink lots of water
 - B. exercise outside
 - C. turn off all fans
 - D. turn on a heater

3. The rainstorm warning signals are important because they indicate _____.
 - A. how heavy the rain is
 - B. that students must go to school
 - C. how long the storm will last
 - D. how hot the weather is

4. Announcements will be made about _____.
 - A. weather in the rainy season
 - B. school closures
 - C. landslips
 - D. all of the above

5. The poster is titled 'Hong Kong Weather Watch'. Another title for the poster could be _____.
 - A. How To Have Fun In A Typhoon
 - B. Announcements For Thrill Seekers
 - C. Weather Warnings - What They Mean
 - D. When To Use An Umbrella

Part B

Listen to the conversation and the announcements. They will be played twice. Do as much as you can the first time and answer all questions the second time. You now have 30 seconds to read the questions.

6. Peter's brother is always out during a storm. Which picture in the poster in *Part A* shows the warnings he always ignores?
- A. Very Hot Weather Warning
 - B. Rainstorm Warning Signals
 - C. Landslip Warning
 - D. Typhoon Signals
7. Peter calls his brother a 'thrill seeker'. A 'thrill seeker' is a person who _____.
- A. searches for people in dangerous weather
 - B. designs typhoon warning safety posters
 - C. takes part in activities that involve danger
 - D. enjoys taking photos with friends
8. Before severe weather, you should _____.
- A. know where to hide your pets
 - B. write a checklist of things to do
 - C. buy the supplies you need
 - D. know how to call the emergency services
9. In the event of severe weather, you should have _____ at home.
- A. water
 - B. candies
 - C. cookies
 - D. all of the above
10. In case the electricity goes out, you should use _____ to provide light.
- A. fires
 - B. oil lamps
 - C. candles
 - D. flashlights
11. If there is no electricity, information about the weather can be found by _____.
- A. calling fire crews
 - B. reading pamphlets
 - C. listening to the radio
 - D. watching TV

12. Animals disappear in storms because they get scared by the _____.
- A. wind and rain
 - B. rain and lightning
 - C. thunder and lightning
 - D. thunder and rain
13. Before a storm, animals need to be _____.
- A. hidden under the house
 - B. taken to the animal shelter
 - C. brought inside and kept calm
 - D. put on a leash
14. Just before stormy weather starts, pet owners should _____.
- A. read a brochure
 - B. prepare a Pet Disaster Supply Kit
 - C. take photos of their pets
 - D. make an ID collar for their pets

Part 2

The school picnic is coming. You and your classmates are discussing where the class should go. Your form teacher has prepared last year's unedited school radio report about the picnic for you to listen to.

Listen to the radio report and answer the questions. The unedited radio report will be played twice. Do as much as you can the first time and answer all questions the second time. You now have 30 seconds to read the questions.

1. Tony, the school radio host, is worried because _____.
 - A. they don't have any music to play
 - B. the programme has already started and there are no guests
 - C. he and Winnie are late
 - D. the programme lasts half an hour and some guests are late

2. Winnie, the school radio host, says that they should 'keep up appearances'. When people 'keep up appearances', they _____.
 - A. look and act very strangely
 - B. whisper quietly to each other
 - C. act as if everything is normal
 - D. record interviews for half an hour

3. The show is about _____.
 - A. music
 - B. exchange students
 - C. the school picnic
 - D. what happens in the studio

4. The representatives can report on _____.

1. exchange students at the picnic	2. where classes went on their picnic
3. the preparation before the picnic	4. different activities at the picnic

 - A. 1, 2 and 3
 - B. 2, 3 and 4
 - C. 1, 3 and 4
 - D. 1, 2 and 4

5. 5A decided to have a picnic instead of a barbecue because _____.
- A. it was hard to cook
 - B. a barbecue would be too expensive
 - C. they were going to Ma On Shan
 - D. it was going to be hot
6. 5A made different lists. They made a total of three lists for _____.
- A. drinks, food and general
 - B. money, food and drinks
 - C. food, general and cups
 - D. plates, drinks and cutlery
7. The sushi was provided by _____.
- A. everyone in 3B
 - B. Winnie and Tony
 - C. Josie and Mary
 - D. Toby
8. Toby says that Josie's mum delivered 'it'. 'It' refers to the _____.
- A. sushi
 - B. lemon tea
 - C. milk tea
 - D. fruit juice

Part 3

You are preparing a discussion about smartphones and how they have changed people's lives. To help you, your English teacher has found a poem for you to listen to.

Listen to the poem and answer the questions. The poem will be read twice. Do as much as you can the first time and answer all questions the second time. You now have 30 seconds to read the questions.

Stanza 1

1. Personification is used in poetry to give things human qualities or features. In stanza one, the words that are used to give the phone human qualities are _____.
 - A. piece, smart, dumb
 - B. smart, dumber, doorknob
 - C. dumber, doorknob, chewing gum
 - D. smart, dumber, dumb
2. The phone is said to be 'dumber than a doorknob'. 'Dumber' in this line means _____.
 - A. more stupid
 - B. more intelligent
 - C. rounder
 - D. none of the above

Stanza 2

3. The rhyming words in this stanza are _____.
 - A. awesome and Internet
 - B. lame and game
 - C. Internet and it
 - D. play and lame
4. The phone used to be 'awesome' but is now described as 'lame' because it can't surf the Internet or play a game. 'Lame' here means _____.
 - A. fantastic
 - B. affected by illness
 - C. unable to walk
 - D. useless

Stanza 3

5. The phone was used to _____.
- A. take photos
 - B. install apps
 - C. check email
 - D. all of the above

Stanza 4

6. The rhyming words in this stanza are _____.
- A. music and calendar
 - B. cannot and time
 - C. bring and time
 - D. calculate and date

Stanzas 4 and 5

7. The functions/programmes that do not work on the phone are _____.
- A. the calculator
 - B. the calendar
 - C. the email
 - D. all of the above
8. The title of the poem could be _____.
- A. The Smartest Phone
 - B. My Phone Is Brand New
 - C. My Smartphone Isn't Very Smart
 - D. My Smartphone Is Cute

END OF PAPER

Do not write on this page.
Answers written on this page will not be marked.

Do not write on this page.
Answers written on this page will not be marked.

Sources of materials used in this paper will be acknowledged in the Territory-wide System Assessment Report on the Basic Competencies of Students in Chinese Language, English Language and Mathematics published by the Hong Kong Examinations and Assessment Authority at a later stage.

©Education Bureau, HKSAR 2015

Prepared by the Hong Kong Examinations and Assessment Authority