

6	E	S	0	8
----------	----------	----------	----------	----------

Education Bureau

Territory-wide System Assessment 2016[◆]

Primary 6

English Language

Speaking

Preparation Time: 3 minutes

Assessment Time: 2 minutes

◆ The 2016 P6 TSA has been suspended. Participation in the 2016 P6 TSA is on a voluntary basis. As a result, this is a TSA in which not all P6 students will participate.

Presentation

Instruction Card

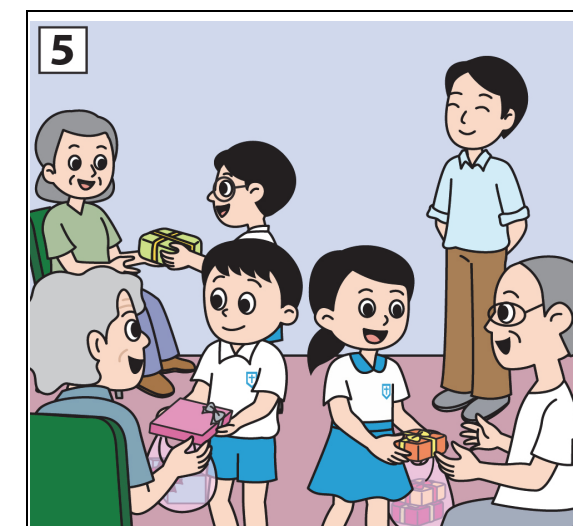
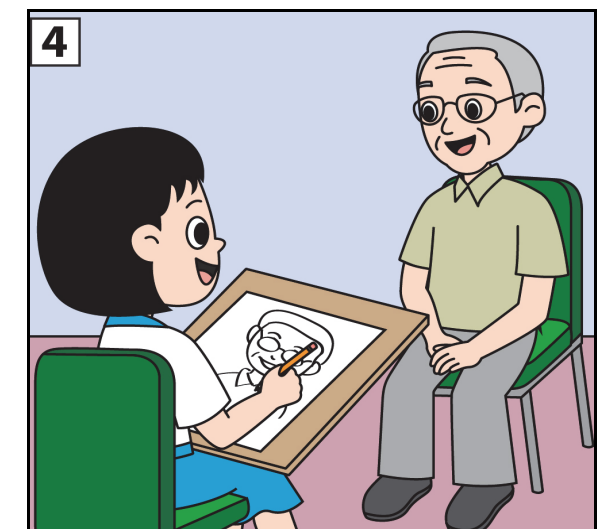
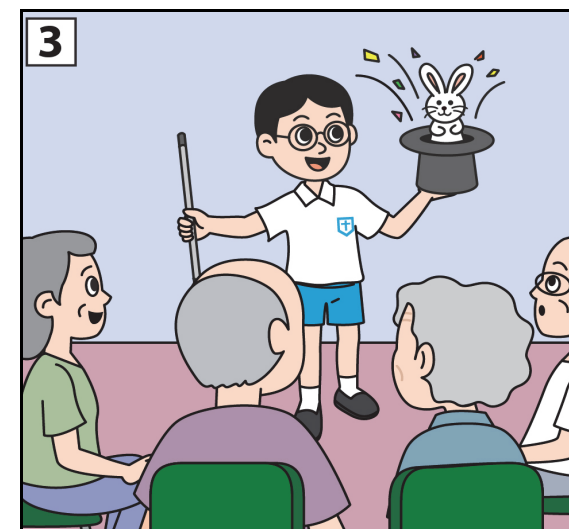
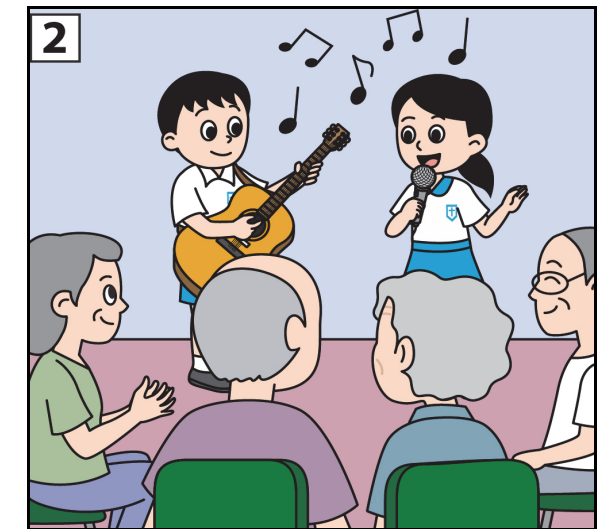
Mary and her classmates did voluntary work last Saturday. Use the pictures on the right to talk about what happened. You will have two minutes to complete the task.

Remember:

- Do not write on this Instruction Card.
- Look at the teacher when you do the presentation.

The following questions may help you:

- Where did Mary and her classmates do their voluntary work?
- Who took them there?
- What performances did they give?
- After the performances, what did they do for the old people?
- What did they give to the old people in the end?
- How did the old people feel? Why?
- Did they all enjoy the day? Why / Why not?



END OF PAPER

©Education Bureau, HKSAR 2016

Prepared by the Hong Kong Examinations and Assessment Authority