



* 3 E L 2 *

3	E	L	2
---	---	---	---

↑
請把電腦條碼貼在方格內
Please stick the barcode label in the box.

Education Bureau Territory-wide System Assessment 2023 Primary 3 English Language Listening

Instructions:

學生須知：

- Stick barcode labels on pages 1, 3 and 5 in the spaces provided.
在第 1、3 及 5 頁的適當位置貼上電腦條碼。
- There are 2 parts in this Question-Answer Booklet.
Answer all questions.
本卷共有 2 部分，全部題目均須作答。
- Do not write in the margins.
請勿在框線以外書寫。
- Time allowed is about 20 minutes.
評估時限約為 20 分鐘。
- The recording will be played continuously until the end of the Listening Assessment.
話語內容會連續播放，直至完卷為止。
- Write your School Code, Class and Class Number in the boxes below.
在下面的方格內填寫學校編號、班別及班號。

Instructions for answering questions:

作答說明：

Multiple Choice Questions – Blacken the circle next to the correct answer with an **HB pencil**. For example:

選擇題 – 選出正確的答案，並用 **HB 鉛筆** 把該選項的圓圈塗黑和塗滿，如：

- | | | | | |
|-------------------------------------|----|-------------------------------------|--|--------------------------|
| <input checked="" type="radio"/> A. | | <input checked="" type="radio"/> A. | | <input type="radio"/> B. |
| <input type="radio"/> B. | or | <input type="radio"/> C. | | <input type="radio"/> D. |
| <input type="radio"/> C. | 或 | | | |
| <input type="radio"/> D. | | | | |

School Code
學校編號

P			
---	--	--	--

Class
班別

3	
---	--

Class No.
班號

--	--

↑
此格只許填寫一個大楷英文字母
Write one capital letter in this box.

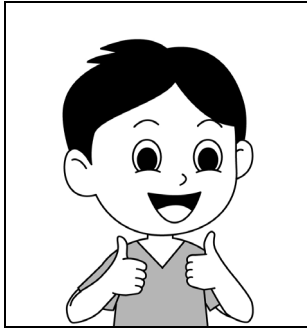
Part 1A

Clara is talking to her friend John about her bag.

Listen to the conversation.

Choose the best answer by blackening the circle.

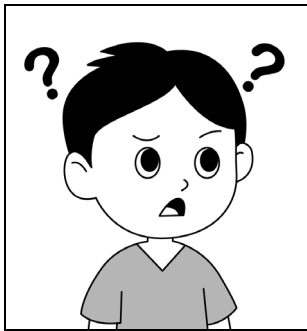
1. How does John feel?



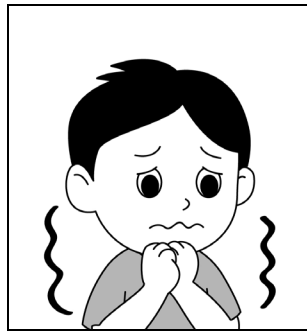
A.



B.



C.

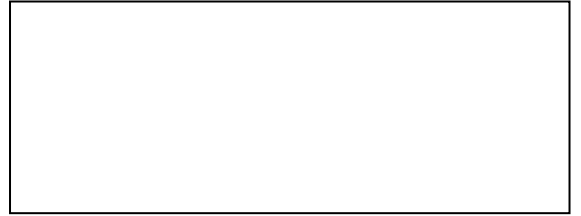


D.

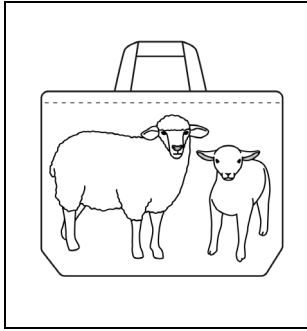
2. The bag was a birthday present from _____.

- A. John
- B. Aunt Mary
- C. Clara's mother
- D. Clara's grandma

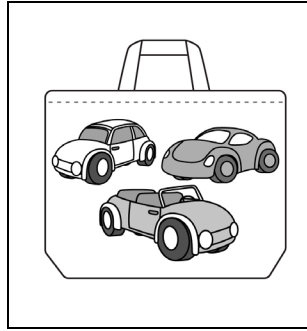
請把電腦條碼貼在方格內
Please stick the barcode label in the box.



3. Which picture shows Clara's bag?



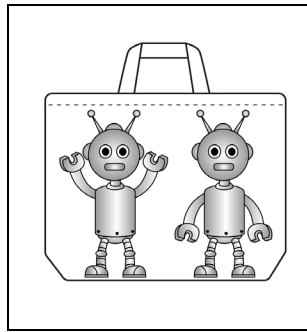
A.



B.



C.



D.

4. Where did Clara get the bag?

- A. March Department Store
- B. Mark Department Store
- C. Mars Department Store
- D. Marsh Department Store

Please do not write in the margin. 請勿在此書寫。

Please do not write in the margin. 請勿在此書寫。

Please do not write in the margin. 請勿在此書寫。

5. Clara can put _____ in her bag.
- A. paper and a water bottle
 - B. paper and coloured pencils
 - C. a water bottle and a lunch box
 - D. coloured pencils and a lunch box

Please do not write in the margin. 請勿在此書寫。

請把電腦條碼貼在方格內
Please stick the barcode label in the box.



Part 1B

Clara is talking to her teacher Mr Chan at school.

Listen to the conversation.

Choose the best answer by blackening the circle.

1. Clara's favourite aunt is Aunt _____.
 - A. Mana
 - B. Mena
 - C. Mina
 - D. Mona

2. What does Clara do with her aunt?
 - A. goes shopping and goes to the library
 - B. plays the piano and cooks
 - C. goes shopping and cooks
 - D. plays the piano and goes to the library

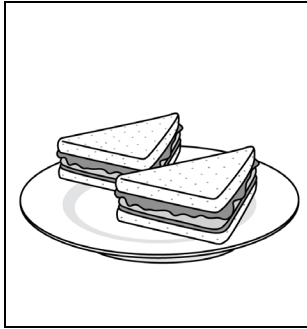
Please do not write in the margin. 請勿在此書寫。

Please do not write in the margin. 請勿在此書寫。

3. Clara's aunt lives in _____.

- A. Sha Tin
- B. Wan Chai
- C. Tin Hau
- D. Chai Wan

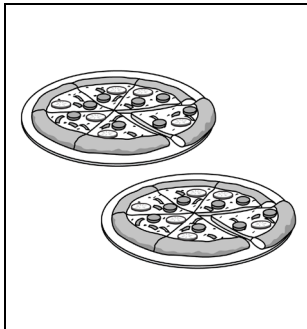
4. Clara wants to buy some _____ for her aunt's birthday.



A.



B.



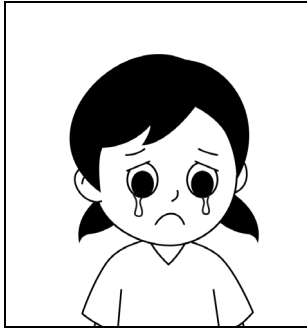
C.



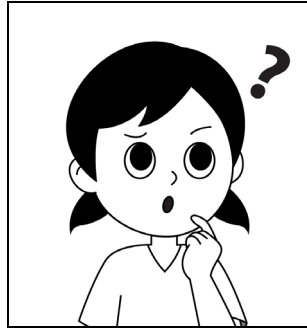
D.

Please do not write in the margin. 請勿在此書寫。

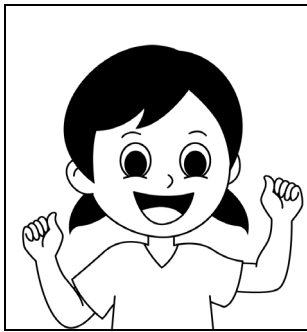
5. How does Clara feel?



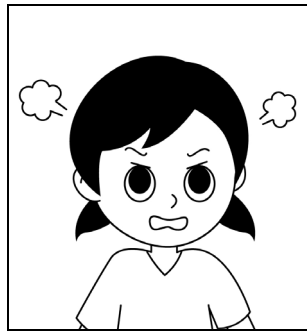
A.



B.



C.



D.

Please do not write in the margin. 請勿在此書寫。

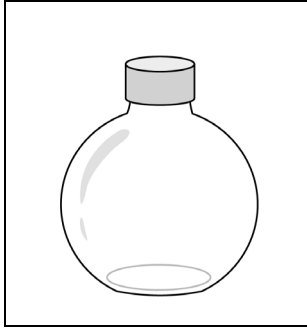
Part 2

Clara's mum is telling Clara a story about a glass bottle.

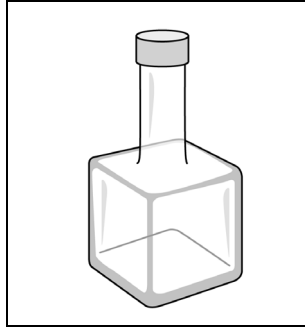
Listen to the story.

Choose the best answer by blackening the circle.

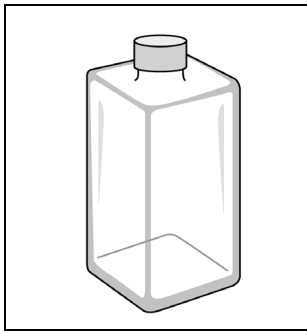
1. Which picture shows the glass bottle?



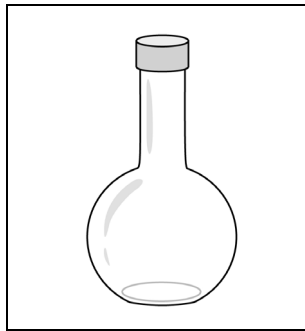
A.



B.



C.



D.

2. The glass bottle lives in _____ Supermarket.

- A. Fanny
- B. Finny
- C. Fonny
- D. Funny

3. The glass bottle is a bottle of _____.

- A. water
- B. oil
- C. soft drink
- D. juice

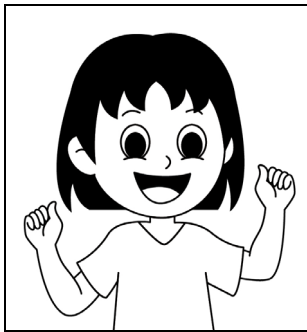
4. Gigi feels _____.



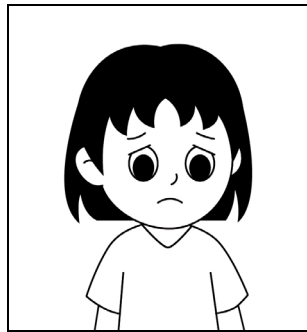
A.



B.



C.



D.

5. Gigi is happy because the glass bottle _____.
- A. is for her mother
 - B. is for the cat
 - C. looks beautiful
 - D. falls on the floor
6. At night, _____ breaks the glass bottle.
- A. Gigi
 - B. Gigi's dog
 - C. Gigi's cat
 - D. Gigi's mother

7. After the glass bottle breaks, Gigi puts it _____.
- A. in a bin
 - B. on the desk
 - C. outside a store
 - D. on the floor
8. In the end, the glass bottle turns into _____.
- A. a water bottle
 - B. a milk bottle
 - C. an old bottle
 - D. many pieces
9. The glass bottle is in _____ Store now.
- A. Bella
 - B. Della
 - C. Fella
 - D. Wella

END OF PAPER

