

9	E	R	3	(Q)
---	---	---	---	---	---	---

Education Bureau
Territory-wide System Assessment 2026
Secondary 3 English Language
Reading
Question Booklet

Instructions:

1. There are 16 pages in this Question Booklet.
2. Time allowed is 35 minutes.
3. Do not write anything in this Question Booklet.
4. **Answer all questions in the Answer Booklet provided.**

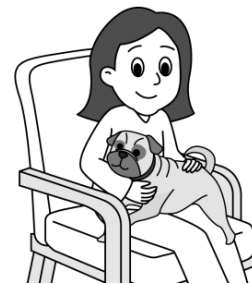
Part 1

Animal Protection Week is coming soon and your class needs to give a presentation about dogs. Your class teacher has asked you to read the magazine article to help you prepare for the presentation.

Read the magazine article and answer the questions.

HOW WOLVES BECAME 'HUMANS' BEST FRIEND'

FROM WOLVES TO DOGS



❶ Some scientists believe that dogs are descendants of wolves. However, they are divided over how dogs turned from wild animals into adorable pets. One idea is that the ancient hunters used wolves to help them hunt or guard their camps. Over time, they trained and tamed the wolves. Another idea is that wolves came near human camps to eat leftover food and got used to living alongside people.

❷ Over a long period of time, wolves that were less fearful-looking, friendlier and more obedient began to evolve and became different from wild wolves. These changes in appearance, behaviour and lifestyle helped them live better with people, and they eventually turned into the dogs we have today.

THERE IS STILL SOME 'WOLF' IN DOGS

Marking territory

❸ Wolves leave their droppings and urine to mark their territory – a place where only their pack is allowed to hunt. Dogs may no longer hunt, but they still raise a leg at a lamp post to urinate and mark the area.



Howling

❹ Wolves howl to communicate with their pack. Dogs usually bark to communicate, but they may howl when they feel anxious or stressed.



Burying prey

❺ Wolves hide their prey in the ground so that they can eat it later. Dogs bury bones for the same reason, even when they are fed regularly.



WORKING DOGS

⑥ Dogs have been humans' loyal companions for thousands of years, but some are much more than household pets.

Guide dogs

⑦ Guide dogs are specially trained to assist people with disabilities, such as blindness. They help their owners avoid obstacles and find their way, making it easier for them to move around safely and live more independently.



Police dogs

⑧ Police dogs have a powerful sense of smell. They are trained to help officers find illegal substances or explosives. They are also used to track suspects by following their scent.



Therapy dogs

⑨ Therapy dogs are specially trained, well-tempered dogs that usually provide people with comfort and support in places like hospitals, nursing homes and schools. In schools, therapy dogs can join reading programmes where children practise reading aloud to them. This helps kids build their confidence and improve their reading skills.



Choose the best answer and blacken the circle in the Answer Booklet.

FROM WOLVES TO DOGS

1. 'Humans' Best Friend' in the title refers to _____.
 - A. dogs
 - B. hunters
 - C. scientists
 - D. wolves

2. Some wolves lived better with people because they were _____.
 1. less fearful looking
 2. less tamed
 3. more obedient
 4. more divided
 - A. 1 and 3
 - B. 2 and 4
 - C. 2, 3 and 4
 - D. All of the above

3. According to some scientists, some wolves began to evolve. 'Evolve' in paragraph 2 means to _____.
 - A. become trained and tamed
 - B. change over a long period of time
 - C. hunt or guard hunters' camps
 - D. get used to living with wild animals

THERE IS STILL SOME 'WOLF' IN DOGS

4. Both wolves and dogs _____.
 1. bury food to eat later
 2. hunt with their packs
 3. raise a leg at a lamp post
 4. urinate to mark their territory
 - A. 2 and 3
 - B. 1 and 4
 - C. 2, 3 and 4
 - D. All of the above

5. According to paragraph 4, dogs _____ when they feel anxious.

- A. bark
- B. dig
- C. howl
- D. urinate

WORKING DOGS

6. Look at the word 'companion' in paragraph 6. The meaning that best corresponds to it is _____.

- A. (n) a person or animal that spends a lot of time with you
At school, we were close companions for several years.
- B. (n) one of a pair of things that go together
I've still got one of the chopsticks but I've lost its companion.
- C. (n) a book that provides information or advice about a particular subject
The 'Encyclopaedia of Gardening' is a companion volume to the 'Encyclopaedia of Plants and Flowers'.
- D. (n) a match for something
White wine is the usual companion to fish.

7. _____ help blind people get around safely.

- A. Household pets
- B. Guide dogs
- C. Police dogs
- D. Therapy dogs

8. According to paragraph 8, police dogs are trained to use their sense of smell to find _____.

- A. their owners
- B. people with disabilities
- C. drugs
- D. police officers

9. According to paragraph 9, therapy dogs usually provide people with emotional support in _____.

- | | |
|--------------|------------------|
| 1. hospitals | 2. nursing homes |
| 3. schools | 4. households |
- A. 1 and 2
B. 3 and 4
C. 1, 2 and 3
D. All of the above

10. Most working dogs need to have _____.

- A. a good sense of smell
B. confidence
C. comfort and support
D. special training

11. The information in this article may also appear _____.

- A. in a history textbook
B. in an encyclopaedia
C. on a pet shop poster
D. on a job search website

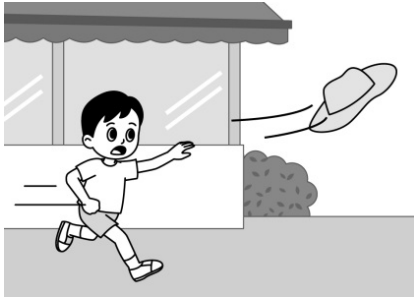
12. The next section of the article will most likely contain _____.

- A. differences between wolves and dogs
B. different household pets
C. the evolution of dogs
D. recommendations for dog care

Part 2

You are going to write a diary entry about a strange event. Your English teacher has given you a poem to help you get started.

Read the poem and answer the questions.



While Walking Down the Street Today

While walking down the street today,
my hat blew off and flew away.
I chased it down the avenue
but couldn't catch it. On it flew.

I chased that hat across a bridge,
then up along a rocky ridge,
then through a park and past a school,
and all around a swimming pool,
beside a creek and up a hill,
and on and on and on until...
it suddenly came to a stop!

It fell and landed right on top
of someone. It was my friend Jim.
He smiled at me. I smiled at him.
It felt so good to see his smile.
We stayed and chatted for a while.
We had so many things to say.
I'm glad my hat blew off today.

Choose the best answer and blacken the circle in the Answer Booklet.

Stanza One

1. It was _____ while the poet was walking down the street.
A. foggy
B. rainy
C. sunny
D. windy

2. The poet chased the hat down the avenue. 'Avenue' here means the _____.
A. bridge
B. hill
C. road
D. park

Stanza Two

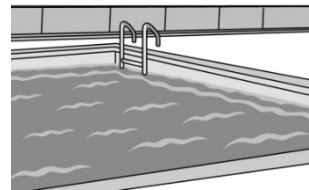
3. Alliteration occurs when two or more words in a phrase or sentence begin with the same sound. It is used in '_____'.
A. a rocky ridge
B. beside a creek
C. chased that hat
D. up a hill

4. The poet visited many places while chasing his hat. Put the following places in the correct order.

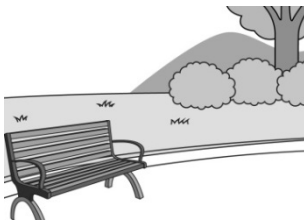
1.



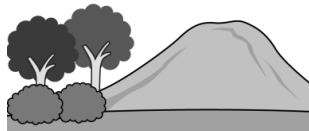
2.



3.



4.



- A. 1→3→2→4
- B. 1→4→3→2
- C. 3→2→4→1
- D. 3→4→1→2

5. The word that rhymes with 'school' is _____.
- A. bridge
 - B. park
 - C. pool
 - D. stop

Stanza Three

6. The poet felt _____ when he saw where his hat had landed.
- A. angry
 - B. calm
 - C. frightened
 - D. happy
7. The word that rhymes with 'smile' is _____.
- A. blew
 - B. say
 - C. top
 - D. while

Stanzas One to Three

8. The poem is called 'While Walking Down the Street Today'. Another title could be '_____':
- A. A New Hat
 - B. An Unpleasant Surprise
 - C. My Hat Brought Me to My Friend
 - D. While We Smile

Part 3

You are writing a school newspaper article about future food. You found a blog entry about the topic.

Read the blog entry and answer the questions.

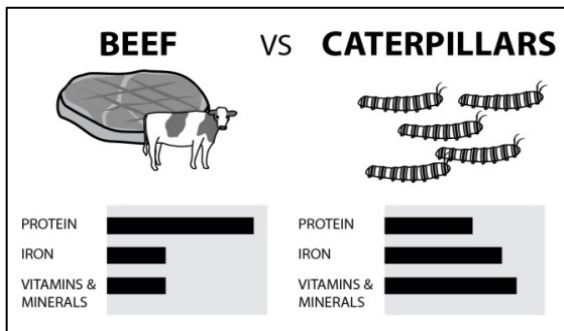
Taste of Tomorrow: What will we eat in 2050?

Posted by Jenny Lam on 11th May 2025

❶ The global population grows by about 80 million people each year and could reach 9.6 billion people by 2050. Although it is worrying that extreme weather and limited farmland are worsening food shortages at the same time, scientific innovations can help. Scientists and food experts are exploring solutions to feed everyone sustainably.

What about trying some crunchy insects?

❷ Insects are rich in fat and protein, good energy sources that are also found in meat. Also, farming insects is cheaper and less polluting than raising cows or chickens.



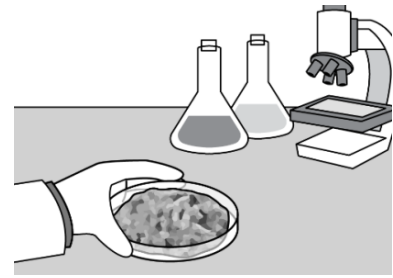
As insects vary in nutrient content, it is important to include different types of insects in your diet to achieve complete nutrition.

❸ You might think, 'No way, I won't eat bugs!' But in fact, around 1,900 insect species are eaten, either raw, boiled or grilled. In Indonesia, dragonflies boiled in coconut milk with ginger is a popular delicacy. In Mexico, spicy grasshoppers are served in tacos. For those who find the idea of eating insects terrible, the secret is making them mouth-watering and tasty.

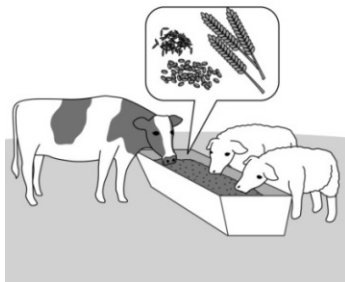


Would you eat cultivated meat?

④ Cultivated meat, also known as lab-grown meat, is real meat grown from animal cells. Depending on the type of meat, it usually takes two to eight weeks to produce. Scientists sometimes change the genes to make the food healthier and taste better.



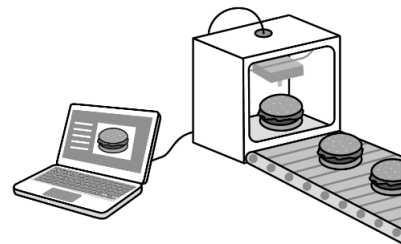
⑤ Although producing cultivated meat may be more costly, it uses fewer resources and takes less time than raising livestock. It could be better for our planet.



← About 70% of US grain and cereal crops are used to feed farm animals.

Heard of 3D printed food?

⑥ 3D printed food can be found in science fiction, but it's real! Imagine customising your meal to fit exactly what you like or need. How does it work? A 3D food printer doesn't have ink cartridges. Its cartridges are filled with edible ingredients that can be eaten safely, such as meat, vegetables or pasta. While simple dishes can be prepared in only a few minutes, more complex ones can take hours or even days.



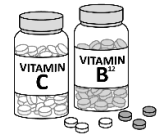
⑦ With a 3D food printer, you could skip grocery shopping and print your meals at home.



← About 14% of global food is lost or wasted each year during transport.

Complete nutrition in an instant

⑧ It's common to take supplements, such as iron, magnesium and vitamins, to boost our nutrition, but what about a full meal packed into a single pill? While meal pills won't replace delicious meals for most people, such nutrient-rich capsules could be handy in emergencies, space missions or places where food is hard to get.



⑨ Putting it all together, the future food scene looks exciting!

Choose the best answer and blacken the circle in the Answer Booklet.

1. According to paragraph 1, which of the following is NOT a reason why we need new ways to produce food?
 - A. extreme weather
 - B. limited farmland
 - C. population growth
 - D. scientific innovations

2. According to paragraph 1, _____ are looking into solutions to make sure everyone has enough to eat.
 1. farmers
 2. food experts
 3. Jenny Lam
 4. scientists
 - A. 1 and 2
 - B. 1 and 3
 - C. 2 and 4
 - D. 3 and 4

3. Insects are a good future food option because they _____.
 - A. are found in meat
 - B. provide energy
 - C. promote farming
 - D. taste like chicken

4. Caterpillars have _____ protein and/but _____ vitamins and minerals than beef.
 - A. less / fewer
 - B. less / more
 - C. more / more
 - D. more / fewer

5. According to paragraph 3, some people refuse to eat insects because they _____.
 - A. feel disgusted
 - B. find it boring
 - C. get a stomachache
 - D. have a food allergy

6. According to paragraph 3, dragonflies are commonly eaten in some parts of _____.
- A. Asia
 - B. Africa
 - C. Europe
 - D. South America
7. Cultivated meat is made in _____.
- A. farms
 - B. grocery stores
 - C. kitchens
 - D. laboratories
8. Growing cultivated meat _____ than raising farm animals.
- A. is less expensive
 - B. is more environmentally friendly
 - C. takes longer
 - D. uses more resources
9. Around 70% of grain and cereal crops grown in the US are used to _____.
- A. feed farm animals
 - B. grow animal cells
 - C. provide food for people
 - D. protect our planet
10. The cartridges of a 3D food printer are filled with edible ingredients. ‘Edible ingredients’ here refers to foods that are _____.
- A. easy to buy from supermarkets
 - B. customised to suit people’s needs
 - C. simple to print at home
 - D. safe to eat
11. A 3D food printer can print _____.
- A. cartridges
 - B. ink
 - C. meals
 - D. science fiction

12. 3D food printers can reduce about _____ % of food waste as food will not need to be transported.
- A. 9.6
 - B. 14
 - C. 30
 - D. 70
13. According to paragraph 8, meal pills are _____.
- 1. delicious
 - 2. handy in emergencies
 - 3. hard to get
 - 4. rich in nutrients
- A. 1 and 2
 - B. 1 and 3
 - C. 2 and 4
 - D. 3 and 4
14. According to the blog entry, _____ can provide complete nutrition in the quickest and easiest way.
- A. insects
 - B. cultivated meat
 - C. 3D printed food
 - D. meal pills
15. Look at the word ‘scene’ in paragraph 9. The meaning that best corresponds to it is _____.
- A. (n) a particular area of activity or way of life
She is a newcomer on the music scene.
 - B. (n) a part of a film, play or book in which the action happens
They shot the opening scene 15 times.
 - C. (n) a loud, angry argument
She had some terrible scenes with her parents.
 - D. (n) the place where something happens
Firefighters arrived on the scene within minutes.
16. The blog entry focuses on _____.
- A. different cooking methods of insects
 - B. future food ideas from science fiction
 - C. new sustainable food ideas for the future
 - D. major threats to global food security

END OF PAPER

